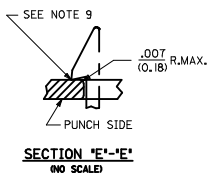
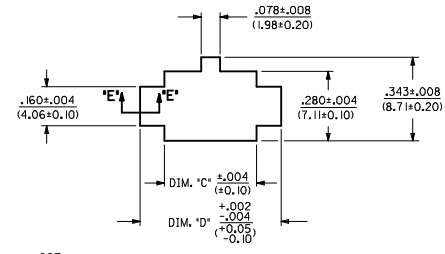
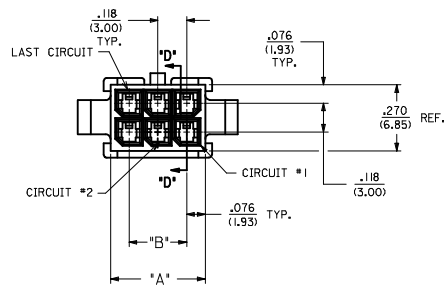


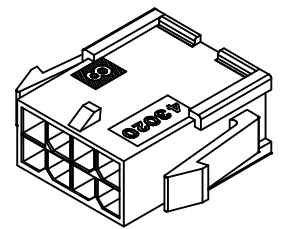
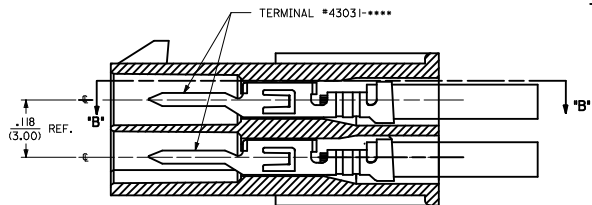
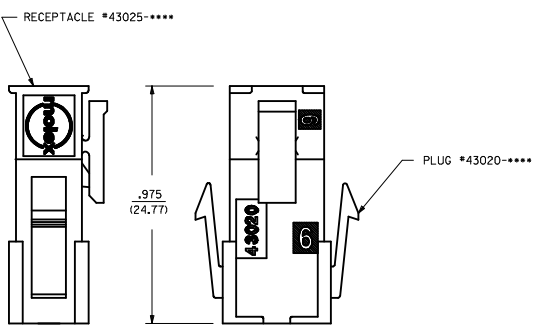
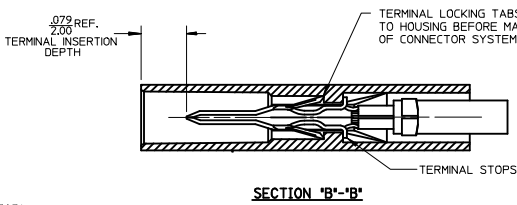
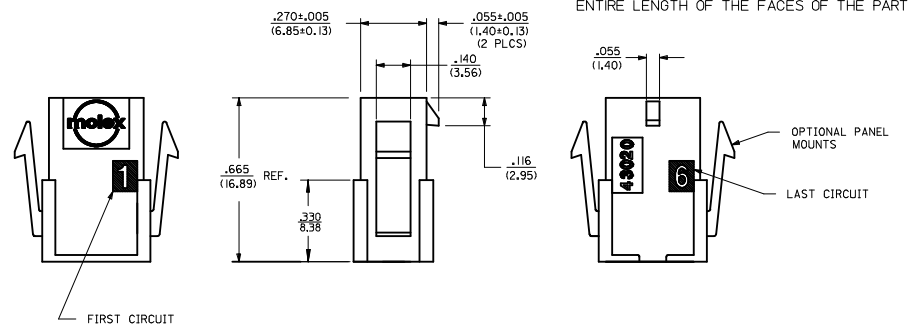
ASSEMBLY ITEM NUMBER	PART CHARACTERISTICS	
	NUMBER OF POSITION	PANEL MOUNT OPTION
43020-0210	02	YES
43020-0211	02	NO
43020-0410	04	YES
43020-0411	04	NO
43020-0610	06	YES
43020-0611	06	NO
43020-0810	08	YES
43020-0811	08	NO
43020-1010	10	YES
43020-1011	10	NO
43020-1210	12	YES
43020-1211	12	NO
43020-1410	14	YES
43020-1411	14	NO
43020-1610	16	YES
43020-1611	16	NO
43020-1810	18	YES
43020-1811	18	NO
43020-2010	20	YES
43020-2011	20	NO
43020-2210	22	YES
43020-2211	22	NO
43020-2410	24	YES
43020-2411	24	NO

CKT. NO.	DIM. 'A'	DIM. 'B'	DIM. 'C'	DIM. 'D'
2	.152/(3.86)	N/A	.166/(4.21)	.311/(7.90)
4	.270/(6.85)	.118/(3.00)	.284/(7.21)	.429/(10.90)
6	.388/(9.85)	.236/(6.00)	.402/(10.21)	.547/(13.89)
8	.506/(12.85)	.354/(9.00)	.520/(13.21)	.665/(16.89)
10	.624/(15.85)	.472/(12.00)	.638/(16.21)	.783/(19.89)
12	.742/(18.85)	.591/(15.00)	.756/(19.21)	.901/(22.89)
14	.860/(21.85)	.709/(18.00)	.874/(22.21)	1.019/(25.88)
16	.978/(24.85)	.827/(21.00)	.992/(25.21)	1.137/(28.88)
18	1.096/(27.85)	.945/(24.00)	1.110/(28.21)	1.255/(31.88)
20	1.215/(30.85)	1.063/(27.00)	1.229/(31.21)	1.373/(34.87)
22	1.333/(33.85)	1.181/(30.00)	1.347/(34.21)	1.491/(37.87)
24	1.451/(36.85)	1.299/(33.00)	1.465/(37.21)	1.609/(40.87)

- NOTES:
- HOUSING MATERIAL: UNFILLED NYLON, UL 94V-2, IEC 60335-1, 4TH EDITION GLOW WIRE CAPABLE, COLOR - BLACK  
\*MATERIAL NUMBERS ON THIS DRAWING ARE GLOW WIRE CAPABLE SINCE INCEPTION
  - FINISH: N/A
  - PRODUCT SPECIFICATION: PS-43045
  - PACKAGING SPECIFICATION: PK-43020-001
  - THIS HOUSING MATES WITH MICRO-FIT RECEPTACLE #43025-\*\*\*\*
  - THIS HOUSING TO BE USED WITH MOLEX MALE TERMINAL #43031-\*\*\*\*
  - DESIGNED FOR .055/(1.4) MINIMUM TO A .100/(2.54) MAXIMUM THICK PANEL OR PRINTED CIRCUIT BOARD.
  - SEE SECTION 'D'-'D' FOR TERMINAL ORIENTATION IN HOUSING.
  - PANEL MOUNT FEATURES MUST LOCK ON SIDE OPPOSITE PUNCH SIDE FOR OPTIMUM RETENTION.
  - THIS PART CONFORMS TO CLASS 'B' REQUIREMENTS OF COSMETIC SPECIFICATION PS-45499-002, WITH THE EXCEPTION THAT FLASH, DISCOLORATION, AND SINK MEET CLASS 'C' REQUIREMENTS.
  - HOUSINGS MAY HAVE DISCOLORATION AREAS THAT DO NOT AFFECT FUNCTIONALITY. DISCOLORATION AREAS MAY EXTEND ACROSS THE ENTIRE LENGTH OF THE FACES OF THE PART.



RECOMMENDED PANEL CUT-OUT (SEE NOTES 7 & 9)



PLUG WITH OPTIONAL PANEL MOUNTS ISO VIEW (8 CIRCUIT SHOWN)

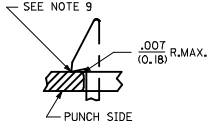
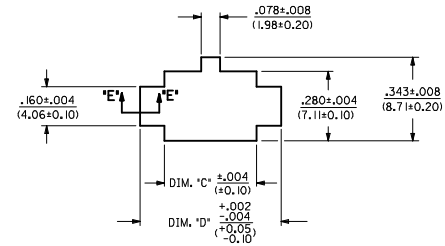
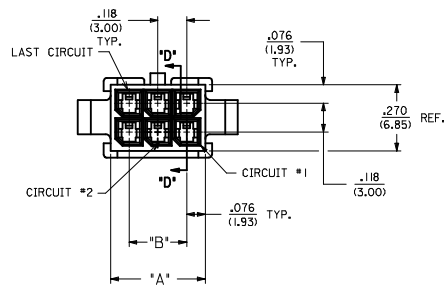
MATED MICRO-FIT CONNECTOR

UPDATE PUNCHED HOLE EC NO: UCP2017-0525 DRWN: JUILLES 2016/09/01 CHKD: SSOUSEK 2016/09/01 APPR: FSMITH 2016/10/07	QUALITY SYMBOLS ∇=0 ∇=0 ∇=0	GENERAL TOLERANCES (UNLESS SPECIFIED)		DIMENSION STYLE IN/MM		SCALE	DESIGN UNITS METRIC	THIRD ANGLE PROJECTION																				
		<table border="1"> <tr><th></th><th>mm</th><th>INCH</th></tr> <tr><td>4 PLACES</td><td>± .010</td><td>± .0004</td></tr> <tr><td>3 PLACES</td><td>± .010</td><td>± .0004</td></tr> <tr><td>2 PLACES</td><td>± 0.25</td><td>± .014</td></tr> <tr><td>1 PLACE</td><td>± 0.35</td><td>± .014</td></tr> <tr><td>0 PLACE</td><td>± .010</td><td>± .0004</td></tr> </table>			mm	INCH	4 PLACES	± .010	± .0004	3 PLACES	± .010	± .0004	2 PLACES	± 0.25	± .014	1 PLACE	± 0.35	± .014	0 PLACE	± .010	± .0004	DRAWN BY JMONTI		DATE 2015/06/16	TITLE	MICRO-FIT(3.0) PLUG WITH OPTIONAL PANEL MOUNTS GLOW WIRE <b>molex</b>		
			mm	INCH																								
		4 PLACES	± .010	± .0004																								
3 PLACES	± .010	± .0004																										
2 PLACES	± 0.25	± .014																										
1 PLACE	± 0.35	± .014																										
0 PLACE	± .010	± .0004																										
ANGULAR ±1/2° DRAFT WHERE APPLICABLE MUST REMAIN WITHIN DIMENSIONS		CHECKED BY BANDERSON		DATE 2015/06	DOCUMENT NO. SD-43020-002	SHEET NO. 1 OF 1																						
A1		MATERIAL NO. SEE CHART		APPROVED BY FSMITH		DATE 2016/10/07		THIS DRAWING CONTAINS INFORMATION THAT IS PROPRIETARY TO MOLEX INCORPORATED AND SHOULD NOT BE USED WITHOUT WRITTEN PERMISSION																				

ASSEMBLY ITEM NUMBER	PART CHARACTERISTICS	
	NUMBER OF POSITION	PANEL MOUNT OPTION
43020-0210	02	YES
43020-0211	02	NO
43020-0410	04	YES
43020-0411	04	NO
43020-0610	06	YES
43020-0611	06	NO
43020-0810	08	YES
43020-0811	08	NO
43020-1010	10	YES
43020-1011	10	NO
43020-1210	12	YES
43020-1211	12	NO
43020-1410	14	YES
43020-1411	14	NO
43020-1610	16	YES
43020-1611	16	NO
43020-1810	18	YES
43020-1811	18	NO
43020-2010	20	YES
43020-2011	20	NO
43020-2210	22	YES
43020-2211	22	NO
43020-2410	24	YES
43020-2411	24	NO

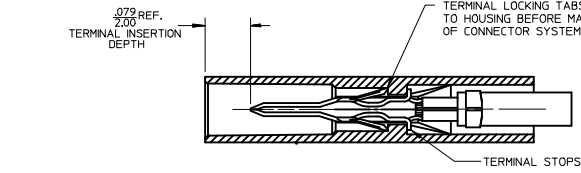
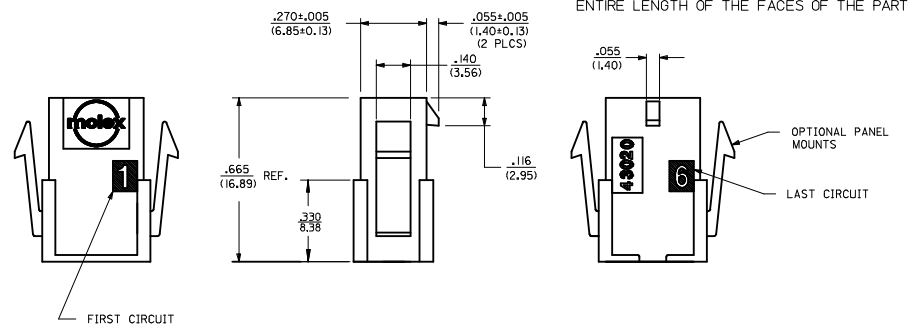
CKT. NO.	DIM. 'A'	DIM. 'B'	DIM. 'C'	DIM. 'D'
2	.152/(3.86)	N/A	.166/(4.21)	.311/(7.90)
4	.270/(6.85)	.118/(3.00)	.284/(7.21)	.429/(10.90)
6	.388/(9.85)	.236/(6.00)	.402/(10.21)	.547/(13.89)
8	.506/(12.85)	.354/(9.00)	.520/(13.21)	.665/(16.89)
10	.624/(15.85)	.472/(12.00)	.638/(16.21)	.783/(19.89)
12	.742/(18.85)	.591/(15.00)	.756/(19.21)	.901/(22.89)
14	.860/(21.85)	.709/(18.00)	.874/(22.21)	1.019/(25.88)
16	.978/(24.85)	.827/(21.00)	.992/(25.21)	1.137/(28.88)
18	1.096/(27.85)	.945/(24.00)	1.110/(28.21)	1.255/(31.88)
20	1.215/(30.85)	1.063/(27.00)	1.229/(31.21)	1.373/(34.87)
22	1.333/(33.85)	1.181/(30.00)	1.347/(34.21)	1.491/(37.87)
24	1.451/(36.85)	1.299/(33.00)	1.465/(37.21)	1.609/(40.87)

- NOTES:
- HOUSING MATERIAL: UNFILLED NYLON, UL 94V-2, IEC 60335-1, 4TH EDITION GLOW WIRE CAPABLE, COLOR - BLACK  
\*MATERIAL NUMBERS ON THIS DRAWING ARE GLOW WIRE CAPABLE SINCE INCEPTION
  - FINISH: N/A
  - PRODUCT SPECIFICATION: PS-43045
  - PACKAGING SPECIFICATION: PK-43020-001
  - THIS HOUSING MATES WITH MICRO-FIT RECEPTACLE #43025-\*\*\*\*
  - THIS HOUSING TO BE USED WITH MOLEX MALE TERMINAL #43031-\*\*\*\*
  - DESIGNED FOR .055/(1.4) MINIMUM TO A .100/(2.54) MAXIMUM THICK PANEL OR PRINTED CIRCUIT BOARD.
  - SEE SECTION 'D'-'D' FOR TERMINAL ORIENTATION IN HOUSING.
  - PANEL MOUNT FEATURES MUST LOCK ON SIDE OPPOSITE PUNCH SIDE FOR OPTIMUM RETENTION.
  - THIS PART CONFORMS TO CLASS 'B' REQUIREMENTS OF COSMETIC SPECIFICATION PS-45499-002, WITH THE EXCEPTION THAT FLASH, DISCOLORATION, AND SINK MEET CLASS 'C' REQUIREMENTS.
  - HOUSINGS MAY HAVE DISCOLORATION AREAS THAT DO NOT AFFECT FUNCTIONALITY. DISCOLORATION AREAS MAY EXTEND ACROSS THE ENTIRE LENGTH OF THE FACES OF THE PART.

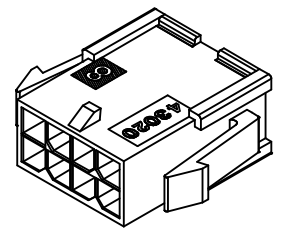


SECTION 'E'-'E'  
NO SCALE

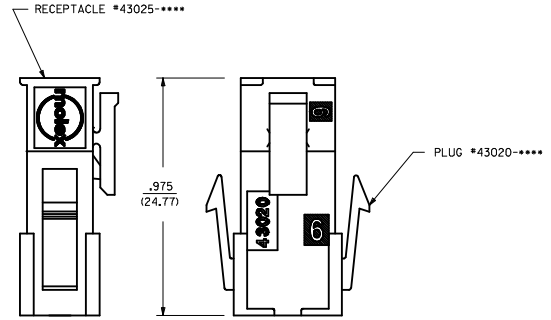
RECOMMENDED PANEL CUT-OUT  
(SEE NOTES 7 & 9)



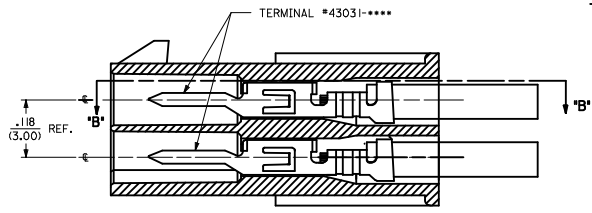
SECTION 'B'-'B'



PLUG WITH OPTIONAL  
PANEL MOUNTS  
ISO VIEW  
(8 CIRCUIT SHOWN)



MATED MICRO-FIT CONNECTOR



SECTION 'D'-'D'  
WITH TERMINAL  
SCALE: 8X

UPDATE PUNCHED HOLE EC NO: UCP2017-0525 DRWN: JUILLES 2016/09/01 CHKD: SSOUSEK 2016/09/01 APPR: FSMITH 2016/10/07	QUALITY SYMBOLS ∇=0 ∇=0 ∇=0	GENERAL TOLERANCES (UNLESS SPECIFIED)		DIMENSION STYLE		SCALE	DESIGN UNITS	THIRD ANGLE PROJECTION		
				IN/MM			METRIC			
				mm	INCH	DRAWN BY	DATE	TITLE		
				4 PLACES ± ---	± ---	JMONT1	2015/06/16	MICRO-FIT(3.0) PLUG WITH OPTIONAL PANEL MOUNTS GLOW WIRE		
		3 PLACES ± ---	± .010	CHECKED BY	DATE	<b>molex</b> DOCUMENT NO. SD-43020-002 SHEET NO. 1 OF 1				
		2 PLACES ± 0.25	± .014	BANDERSON	2015/06					
		1 PLACE ± 0.35	± ---	APPROVED BY	DATE	THIS DRAWING CONTAINS INFORMATION THAT IS PROPRIETARY TO MOLEX INCORPORATED AND SHOULD NOT BE USED WITHOUT WRITTEN PERMISSION				
		0 PLACE ± ---	± ---	FSMITH	2016/10/07					
		ANGULAR ±1/2°		MATERIAL NO.						
		DRAFT WHERE APPLICABLE MUST REMAIN WITHIN DIMENSIONS		SEE CHART						