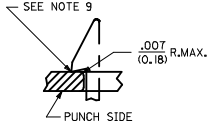
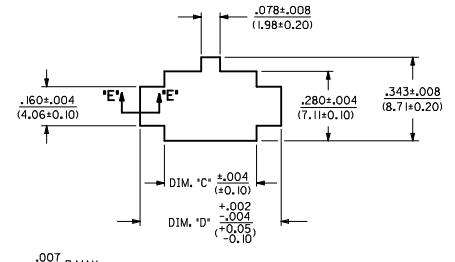
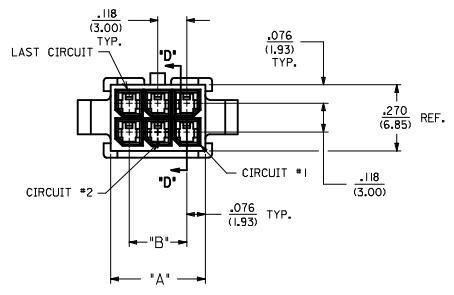


ASSEMBLY ITEM NUMBER	PART CHARACTERISTICS	
	NUMBER OF POSITION	PANEL MOUNT OPTION
43020-0210	02	YES
43020-0211	02	NO
43020-0410	04	YES
43020-0411	04	NO
43020-0610	06	YES
43020-0611	06	NO
43020-0810	08	YES
43020-0811	08	NO
43020-1010	10	YES
43020-1011	10	NO
43020-1210	12	YES
43020-1211	12	NO
43020-1410	14	YES
43020-1411	14	NO
43020-1610	16	YES
43020-1611	16	NO
43020-1810	18	YES
43020-1811	18	NO
43020-2010	20	YES
43020-2011	20	NO
43020-2210	22	YES
43020-2211	22	NO
43020-2410	24	YES
43020-2411	24	NO

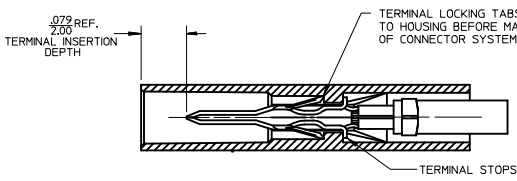
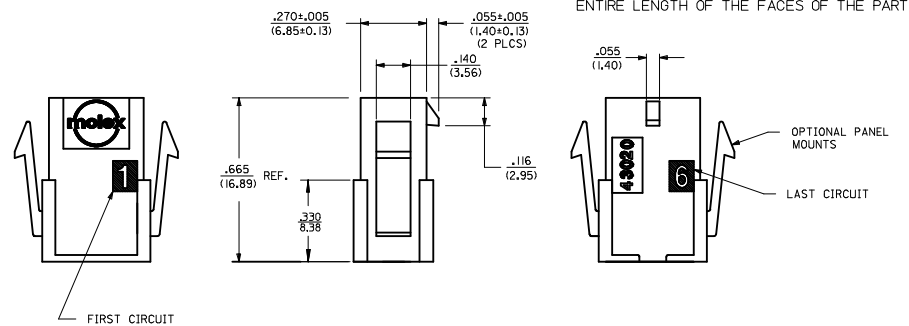
CKT. NO.	DIM. 'A'	DIM. 'B'	DIM. 'C'	DIM. 'D'
2	.152/(3.86)	N/A	.166/(4.21)	.311/(7.90)
4	.270/(6.85)	.118/(3.00)	.284/(7.21)	.429/(10.90)
6	.388/(9.85)	.236/(6.00)	.402/(10.21)	.547/(13.89)
8	.506/(12.85)	.354/(9.00)	.520/(13.21)	.665/(16.89)
10	.624/(15.85)	.472/(12.00)	.638/(16.21)	.783/(19.89)
12	.742/(18.85)	.591/(15.00)	.756/(19.21)	.901/(22.89)
14	.860/(21.85)	.709/(18.00)	.874/(22.21)	1.019/(25.88)
16	.978/(24.85)	.827/(21.00)	.992/(25.21)	1.137/(28.88)
18	1.096/(27.85)	.945/(24.00)	1.110/(28.21)	1.255/(31.88)
20	1.215/(30.85)	1.063/(27.00)	1.229/(31.21)	1.373/(34.87)
22	1.333/(33.85)	1.181/(30.00)	1.347/(34.21)	1.491/(37.87)
24	1.451/(36.85)	1.299/(33.00)	1.465/(37.21)	1.609/(40.87)

- NOTES:
- HOUSING MATERIAL: UNFILLED NYLON, UL 94V-2, IEC 60335-1, 4TH EDITION GLOW WIRE CAPABLE, COLOR - BLACK
*MATERIAL NUMBERS ON THIS DRAWING ARE GLOW WIRE CAPABLE SINCE INCEPTION
 - FINISH: N/A
 - PRODUCT SPECIFICATION: PS-43045
 - PACKAGING SPECIFICATION: PK-43020-001
 - THIS HOUSING MATES WITH MICRO-FIT RECEPTACLE #43025-****
 - THIS HOUSING TO BE USED WITH MOLEX MALE TERMINAL #43031-****
 - DESIGNED FOR .055/(1.4) MINIMUM TO A .100/(2.54) MAXIMUM THICK PANEL OR PRINTED CIRCUIT BOARD.
 - SEE SECTION 'D'-'D' FOR TERMINAL ORIENTATION IN HOUSING.
 - PANEL MOUNT FEATURES MUST LOCK ON SIDE OPPOSITE PUNCH SIDE FOR OPTIMUM RETENTION.
 - THIS PART CONFORMS TO CLASS 'B' REQUIREMENTS OF COSMETIC SPECIFICATION PS-45499-002, WITH THE EXCEPTION THAT FLASH, DISCOLORATION, AND SINK MEET CLASS 'C' REQUIREMENTS.
 - HOUSINGS MAY HAVE DISCOLORATION AREAS THAT DO NOT AFFECT FUNCTIONALITY. DISCOLORATION AREAS MAY EXTEND ACROSS THE ENTIRE LENGTH OF THE FACES OF THE PART.

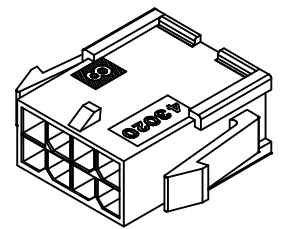


SECTION 'E'-'E'
NO SCALE

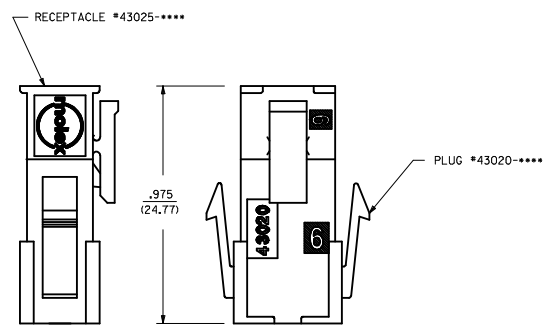
RECOMMENDED PANEL CUT-OUT
(SEE NOTES 7 & 9)



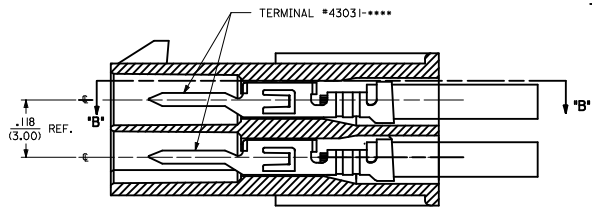
SECTION 'B'-'B'



PLUG WITH OPTIONAL
PANEL MOUNTS
ISO VIEW
(8 CIRCUIT SHOWN)



MATED MICRO-FIT CONNECTOR



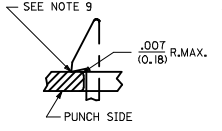
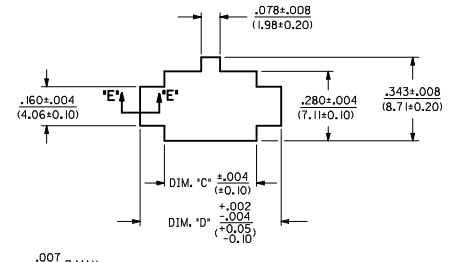
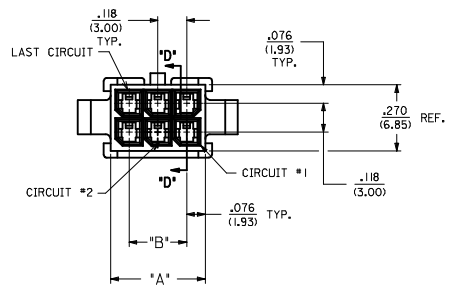
SECTION 'D'-'D'
WITH TERMINAL
SCALE: 8X

UPDATE PUNCHED HOLE EC NO: UCP2017-0525 DRWN: J00ILES 2016/09/01 CHKD: S50USEK 2016/09/01 APPR: FSMITH 2016/10/07	QUALITY SYMBOLS ∇=0 ∇=0 ∇=0	GENERAL TOLERANCES (UNLESS SPECIFIED)		DIMENSION STYLE IN/MM		SCALE	DESIGN UNITS METRIC	THIRD ANGLE PROJECTION		
		4 PLACES ± --- ± ---		DRAWN BY DATE JMONT1 2015/06/16		TITLE	MICRO-FIT(3.0) PLUG WITH OPTIONAL PANEL MOUNTS GLOW WIRE molex			
		3 PLACES ± --- ± .010		CHECKED BY DATE BANDERSON 2015/06						
		2 PLACES ± 0.25 ± .014		APPROVED BY DATE FSMITH 2016/10/07						
		1 PLACE ± 0.35 ± ---		MATERIAL NO.		DOCUMENT NO.	SHEET NO.			
0 PLACE ± --- ± ---		ANGULAR ±1/2°		SEE CHART		SD-43020-002		1 OF 1		
DRAFT WHERE APPLICABLE MUST REMAIN WITHIN DIMENSIONS		THIS DRAWING CONTAINS INFORMATION THAT IS PROPRIETARY TO MOLEX INCORPORATED AND SHOULD NOT BE USED WITHOUT WRITTEN PERMISSION								

ASSEMBLY ITEM NUMBER	PART CHARACTERISTICS	
	NUMBER OF POSITION	PANEL MOUNT OPTION
43020-0210	02	YES
43020-0211	02	NO
43020-0410	04	YES
43020-0411	04	NO
43020-0610	06	YES
43020-0611	06	NO
43020-0810	08	YES
43020-0811	08	NO
43020-1010	10	YES
43020-1011	10	NO
43020-1210	12	YES
43020-1211	12	NO
43020-1410	14	YES
43020-1411	14	NO
43020-1610	16	YES
43020-1611	16	NO
43020-1810	18	YES
43020-1811	18	NO
43020-2010	20	YES
43020-2011	20	NO
43020-2210	22	YES
43020-2211	22	NO
43020-2410	24	YES
43020-2411	24	NO

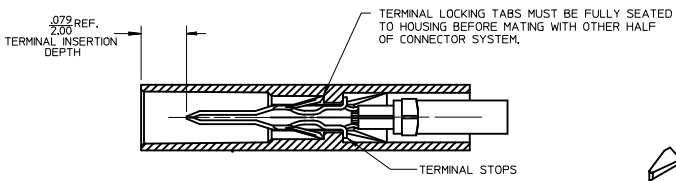
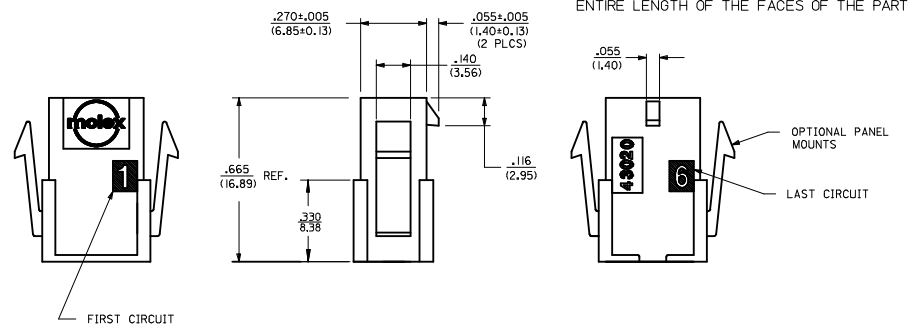
CKT. NO.	DIM. 'A'	DIM. 'B'	DIM. 'C'	DIM. 'D'
2	.152/(3.86)	N/A	.166/(4.21)	.311/(7.90)
4	.270/(6.85)	.118/(3.00)	.284/(7.21)	.429/(10.90)
6	.388/(9.85)	.236/(6.00)	.402/(10.21)	.547/(13.89)
8	.506/(12.85)	.354/(9.00)	.520/(13.21)	.665/(16.89)
10	.624/(15.85)	.472/(12.00)	.638/(16.21)	.783/(19.89)
12	.742/(18.85)	.591/(15.00)	.756/(19.21)	.901/(22.89)
14	.860/(21.85)	.709/(18.00)	.874/(22.21)	1.019/(25.88)
16	.978/(24.85)	.827/(21.00)	.992/(25.21)	1.137/(28.88)
18	1.096/(27.85)	.945/(24.00)	1.110/(28.21)	1.255/(31.88)
20	1.215/(30.85)	1.063/(27.00)	1.229/(31.21)	1.373/(34.87)
22	1.333/(33.85)	1.181/(30.00)	1.347/(34.21)	1.491/(37.87)
24	1.451/(36.85)	1.299/(33.00)	1.465/(37.21)	1.609/(40.87)

- NOTES:
- HOUSING MATERIAL: UNFILLED NYLON, UL 94V-2, IEC 60335-1, 4TH EDITION GLOW WIRE CAPABLE, COLOR - BLACK
*MATERIAL NUMBERS ON THIS DRAWING ARE GLOW WIRE CAPABLE SINCE INCEPTION
 - FINISH: N/A
 - PRODUCT SPECIFICATION: PS-43045
 - PACKAGING SPECIFICATION: PK-43020-001
 - THIS HOUSING MATES WITH MICRO-FIT RECEPTACLE #43025-****
 - THIS HOUSING TO BE USED WITH MOLEX MALE TERMINAL #43031-****
 - DESIGNED FOR .055/(1.4) MINIMUM TO A .100/(2.54) MAXIMUM THICK PANEL OR PRINTED CIRCUIT BOARD.
 - SEE SECTION 'D'-'D' FOR TERMINAL ORIENTATION IN HOUSING.
 - PANEL MOUNT FEATURES MUST LOCK ON SIDE OPPOSITE PUNCH SIDE FOR OPTIMUM RETENTION.
 - THIS PART CONFORMS TO CLASS 'B' REQUIREMENTS OF COSMETIC SPECIFICATION PS-45499-002, WITH THE EXCEPTION THAT FLASH, DISCOLORATION, AND SINK MEET CLASS 'C' REQUIREMENTS.
 - HOUSINGS MAY HAVE DISCOLORATION AREAS THAT DO NOT AFFECT FUNCTIONALITY. DISCOLORATION AREAS MAY EXTEND ACROSS THE ENTIRE LENGTH OF THE FACES OF THE PART.

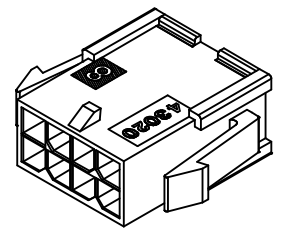


SECTION 'E'-'E'
NO SCALE

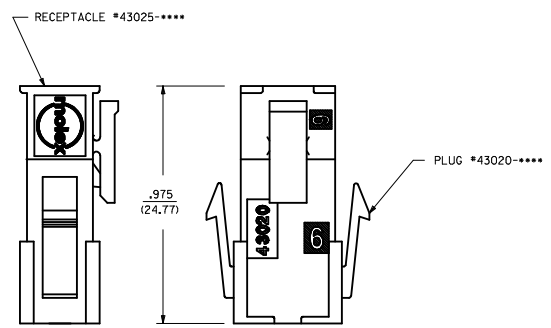
RECOMMENDED PANEL CUT-OUT
(SEE NOTES 7 & 9)



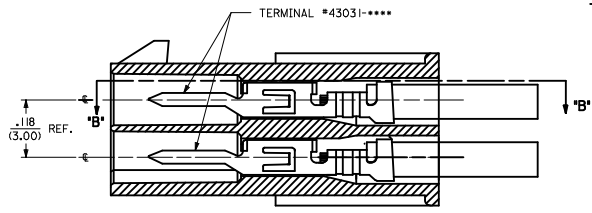
SECTION 'B'-'B'



PLUG WITH OPTIONAL
PANEL MOUNTS
ISO VIEW
(8 CIRCUIT SHOWN)



MATED MICRO-FIT CONNECTOR



SECTION 'D'-'D'
WITH TERMINAL
SCALE: 8X

UPDATE PUNCHED HOLE EC NO: UCP2017-0525 DRWN: J00ILES 2016/09/01 CHKD: S50USEK 2016/09/01 APPR: FSMITH 2016/10/07	QUALITY SYMBOLS ∇=0 ∇=0 ∇=0	GENERAL TOLERANCES (UNLESS SPECIFIED)		DIMENSION STYLE IN/MM		SCALE METRIC	DESIGN UNITS METRIC		THIRD ANGLE PROJECTION	
		4 PLACES ± --- ± ---	3 PLACES ± --- ± .010	DRAWN BY JMONT1	DATE 2015/06/16	TITLE MICRO-FIT(3.0) PLUG WITH OPTIONAL PANEL MOUNTS GLOW WIRE				
		2 PLACES ± 0.25 ± .014	1 PLACE ± 0.35 ± ---	CHECKED BY BANDERSON	DATE 2015/06	MATERIAL NO. SEE CHART				
		0 PLACE ± --- ± ---	ANGULAR ±1/2°	APPROVED BY FSMITH	DATE 2016/10/07	DOCUMENT NO. SD-43020-002				
DRAFT WHERE APPLICABLE MUST REMAIN WITHIN DIMENSIONS		SIZE C		THIS DRAWING CONTAINS INFORMATION THAT IS PROPRIETARY TO MOLEX INCORPORATED AND SHOULD NOT BE USED WITHOUT WRITTEN PERMISSION				SHEET NO. 1 OF 1		