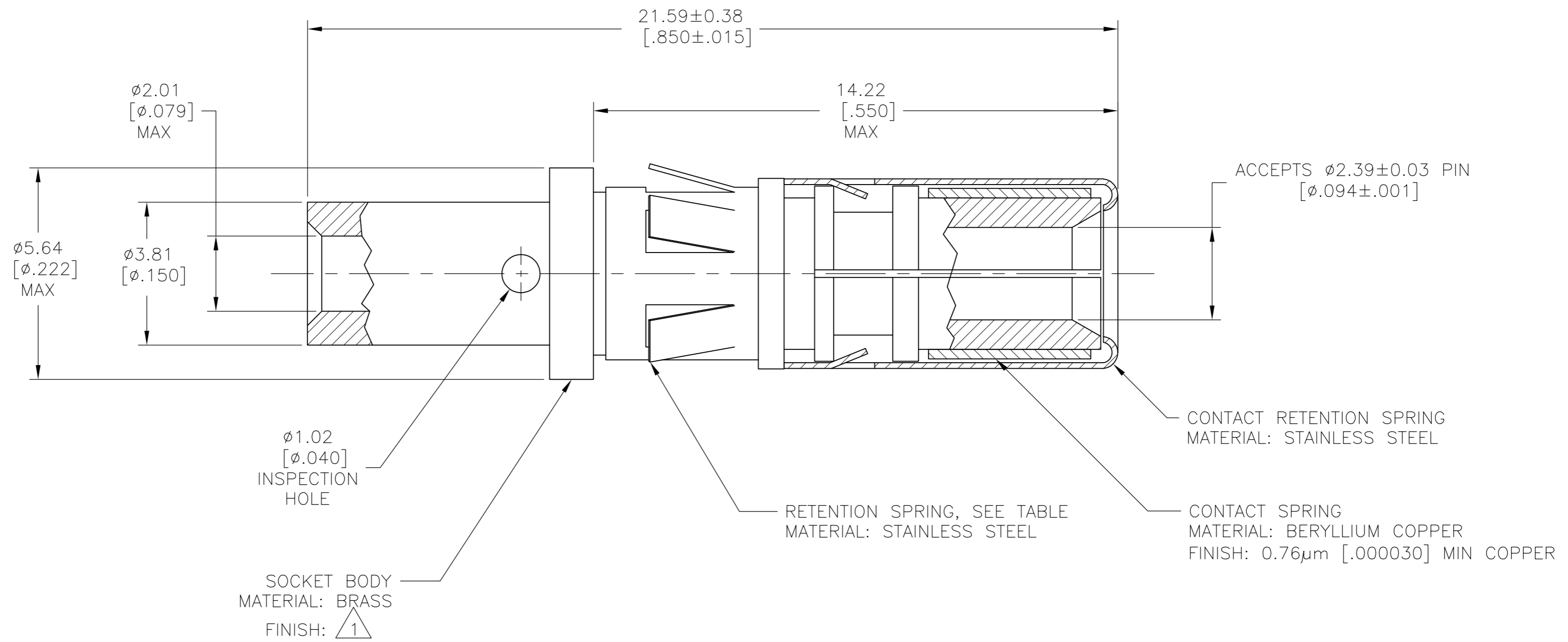


THIS DRAWING IS UNPUBLISHED. RELEASED FOR PUBLICATION
 © COPYRIGHT - By - ALL RIGHTS RESERVED.

| REVISIONS | | | | |
|-----------|-----|---------------------------|-----------|-------|
| P | LTR | DESCRIPTION | DATE | APVD |
| H1 | | REVISED PER ECO-16-004223 | 20JUL2016 | NK MZ |



1 0.76µm [0.000030] MIN GOLD OVER 1.27µm [0.000050] MIN NICKEL.

2 ASSEMBLY MATES WITH PIN ASSEMBLY 202421.

| | | |
|----------|------------------|---------------------|
| OBSOLETE | NO | 202418-3 |
| | YES | 202418-1 |
| | RETENTION SPRING | PART NUMBER |

| | | | | |
|--|--|-----------------------------|--|-----------------|
| THIS DRAWING IS A CONTROLLED DOCUMENT. | | DWN B.CARBO 30 DEC 97 | TE Connectivity | |
| DIMENSIONS: mm [INCHES] | | CHK R.STONE 09 JAN 98 | | |
| TOLERANCES UNLESS OTHERWISE SPECIFIED: | | APVD G.STEINHAUER 30 JAN 98 | NAME CONTACT ASSEMBLY, SOCKET, WIRE SIZE #16-#18, TYPE I | |
| 0 PLC ± - | | PRODUCT SPEC | SIZE A2 | CAGE CODE 00779 |
| 1 PLC ± - | | APPLICATION SPEC | DRAWING NO C=202418 | RESTRICTED TO - |
| 2 PLC ± 0.13 [0.005] | | WEIGHT | SCALE 10:1 | SHEET 1 OF 1 |
| 3 PLC ± - | | CUSTOMER DRAWING | REV H1 | |
| 4 PLC ± - | | | | |
| ANGLES ± - | | | | |
| FINISH SEE CALLOUTS | | | | |