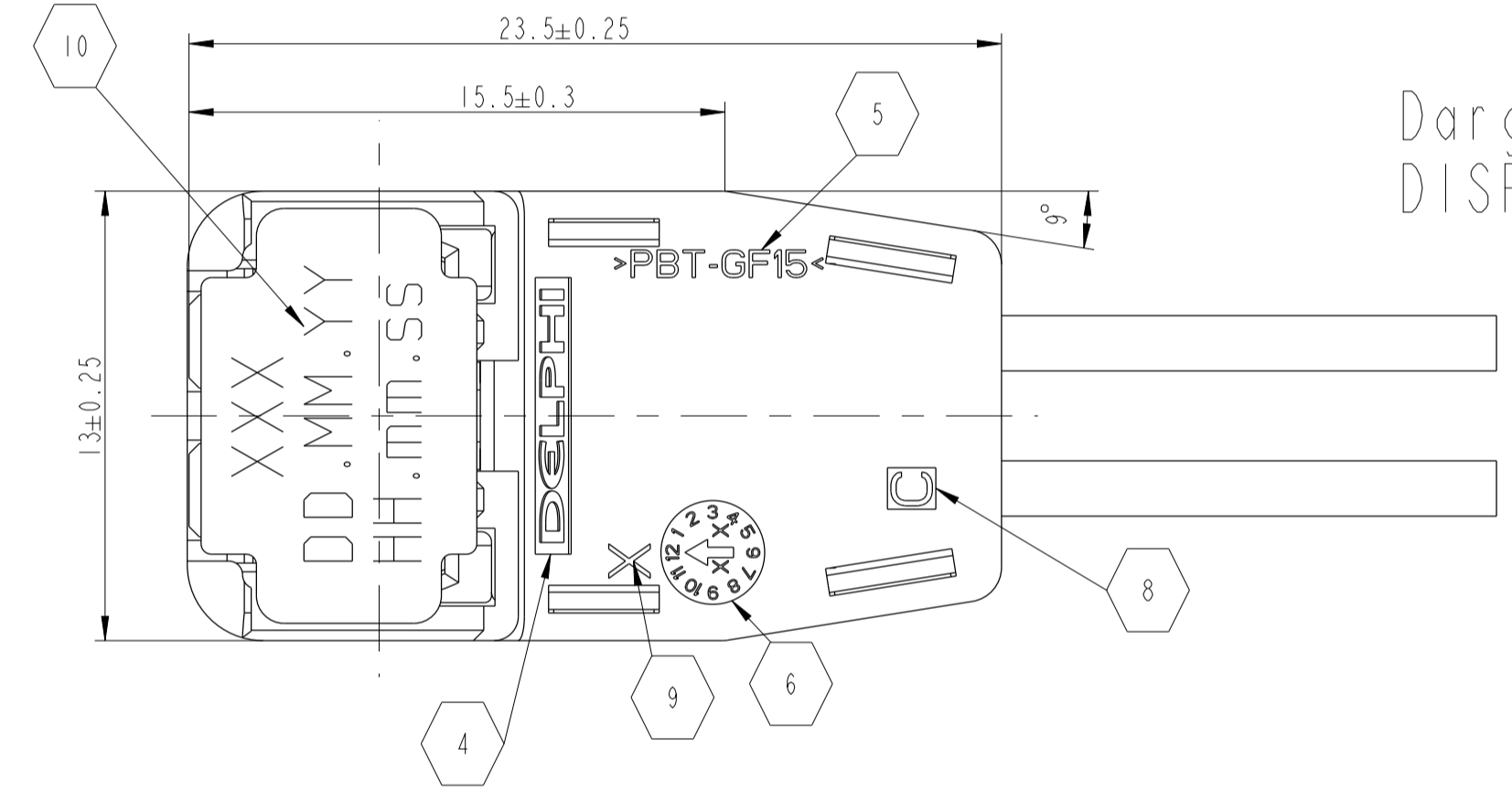
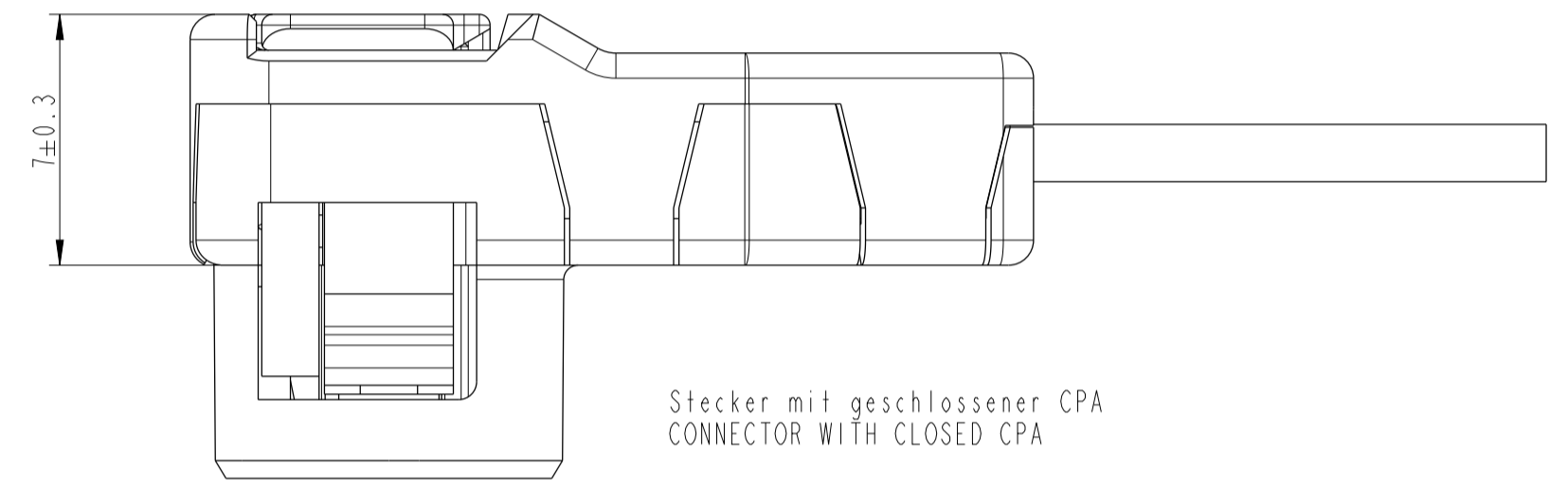
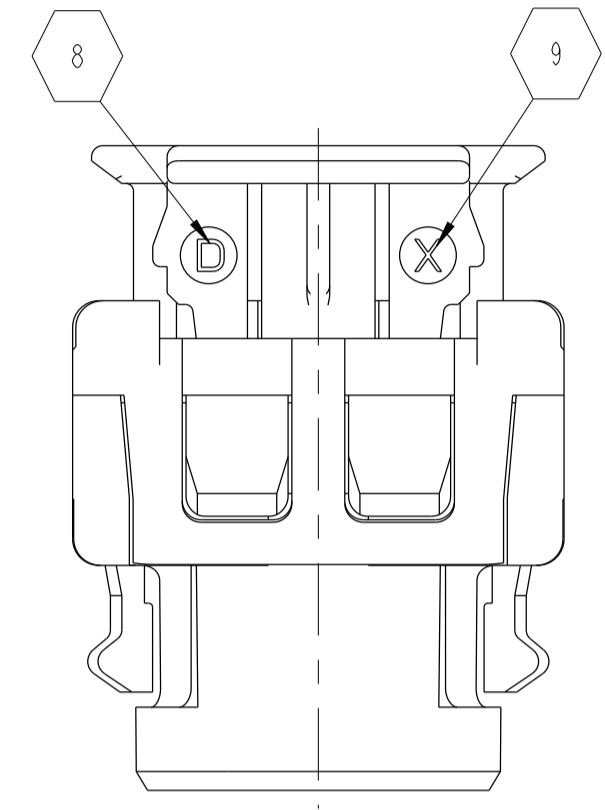
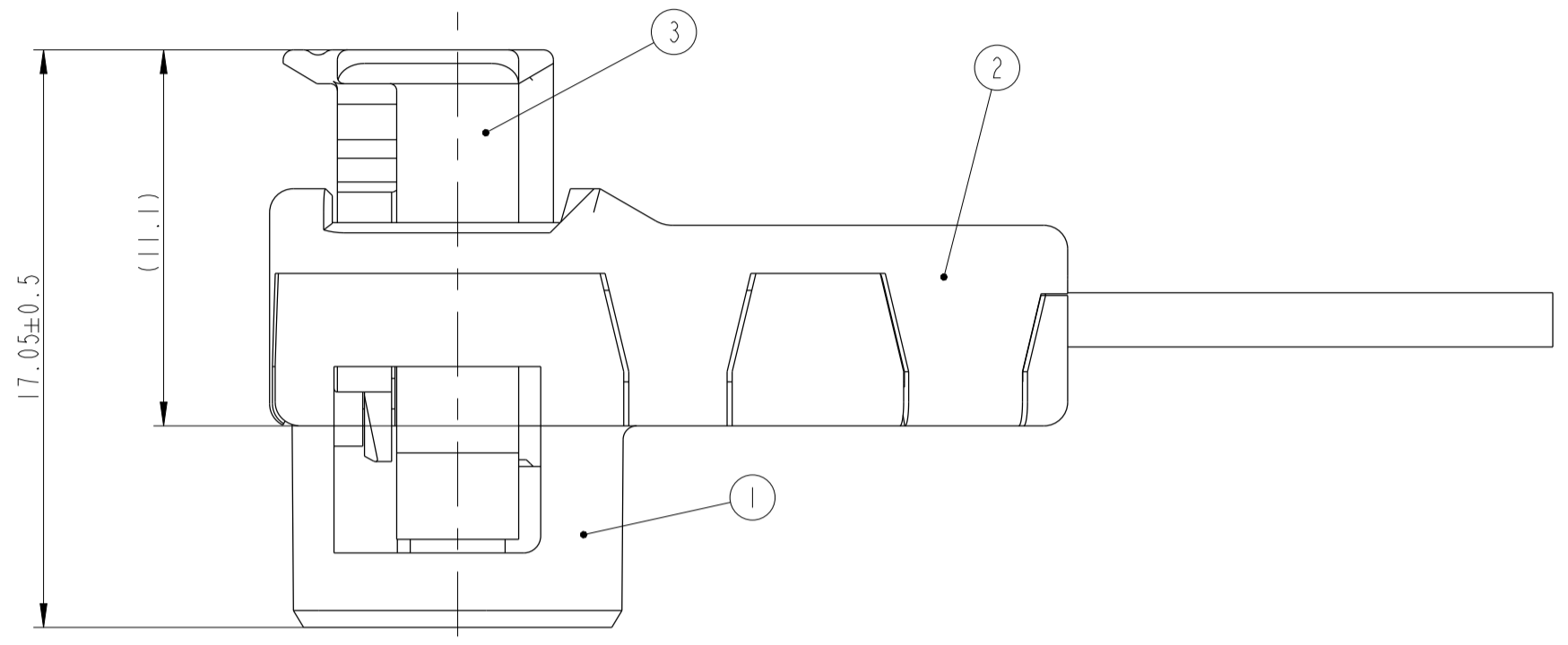
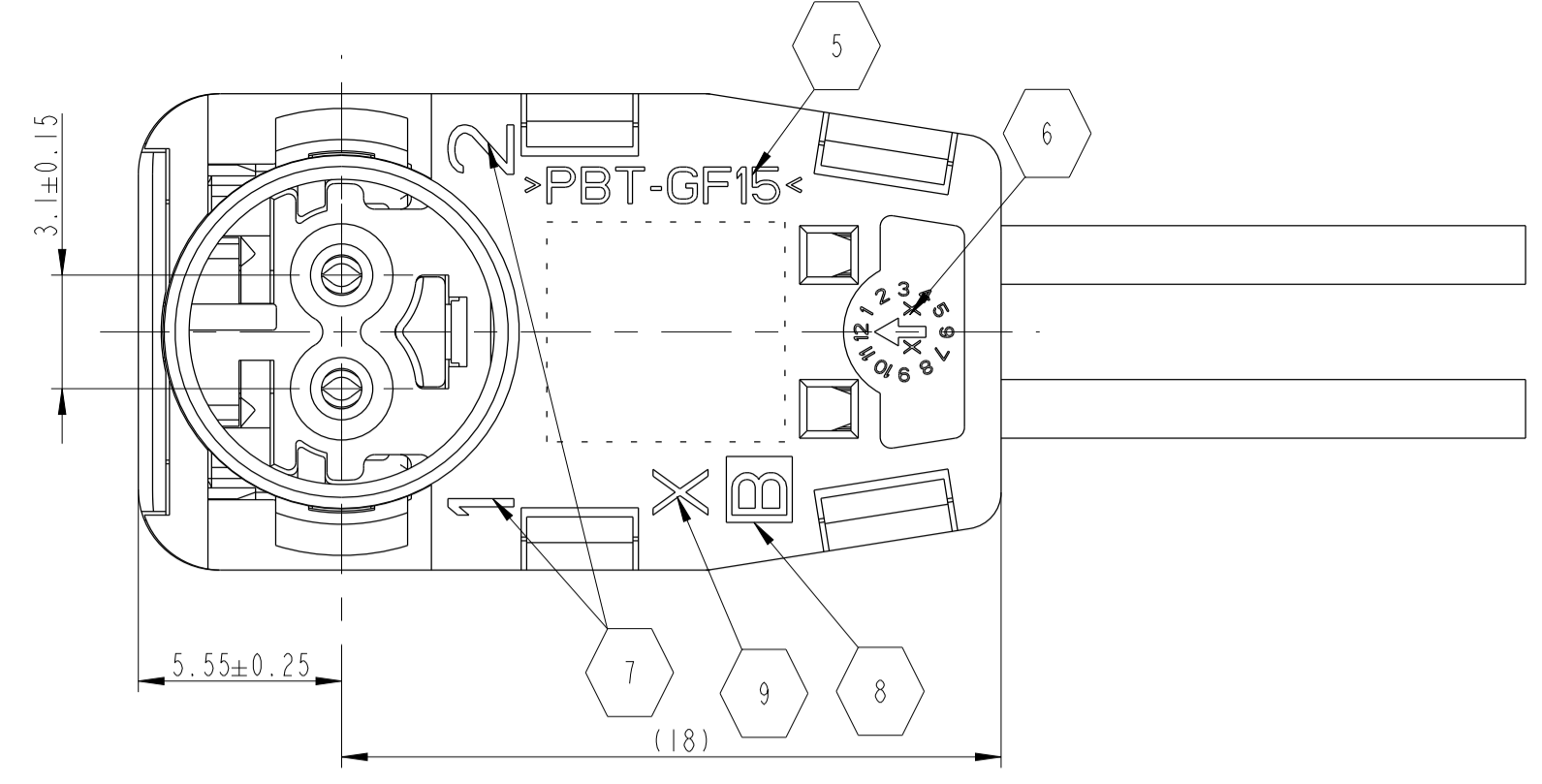
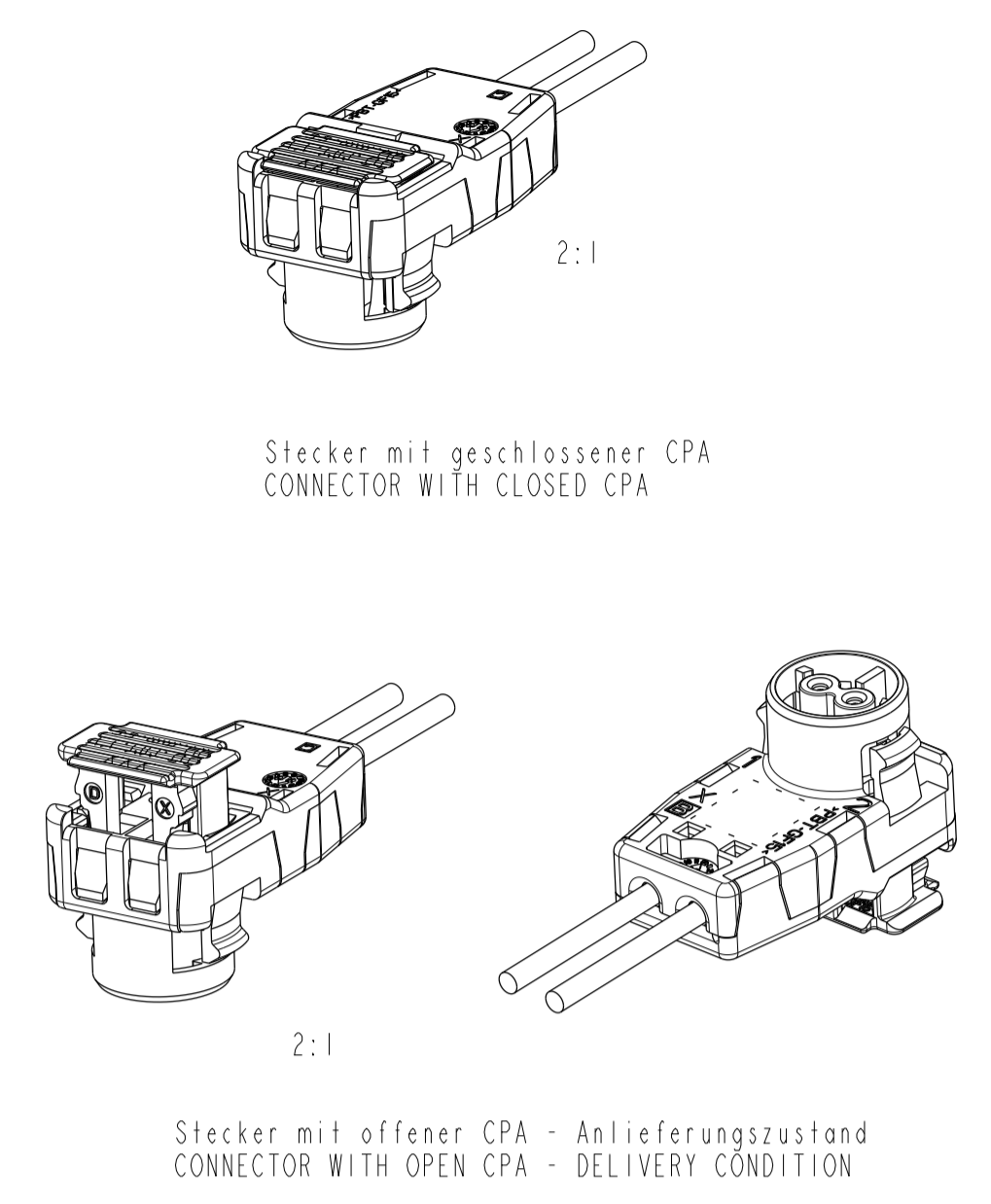


Bemerkung
NOTES

| | |
|----|---|
| 1 | Kontakt: Veredelung im Kontaktierungsbereich min. 0,8 my AuCo 0,3 über 1,25-2,25 my Ni TERMINAL: PLATING CONTACT AREA: MIN. 0,8 my AuCo 0,3 OVER 1,25-2,25 my Ni |
| 3 | Retainer fuer Kodierung I / II / III siehe Zeichnung 6 900 51 03 / 17 / 20 / 31 RETAINER FOR CODING I / II / III SEE DRAWING 6 900 51 03 / 17 / 20 / 31 |
| 4 | FCI oder DELPHI Firmenzeichen FCI OR DELPHI LOGO |
| 5 | Materialkennzeichnung (Einzelteil) MATERIAL MARKING (SINGLE PART) |
| 6 | Datumsuhr (Einzelteil) DATE CLOCK (SINGLE PART) |
| 7 | Kammernumerierung CAVITY NUMBERS |
| 8 | Aenderungsindex (Einzelteil) REVISION INDEX (SINGLE PART) |
| 9 | Nestmarkierung (Einzelteil) MOULD CAVITY NUMBER (SINGLE PART) |
| 10 | Pruefdatumsaufdruck, Tag/Monat/Jahr ELECTRICAL CHECK DATE PRINTED, DAY/MONTH/YEAR |
| 11 | Verbindung Kabel zu Kontakt geschweißt CONNECTION WIRE TO CONTACT WELDED |
| 12 | ENGLISH TRANSLATION IS BELIEVED TO BE CORRECT. IN CASE OF TRANSLATION ERRORS, GERMAN VERSION SHOULD GOVERN |
| 13 | Steckermontage / -demontage beschrieben in Verarbeitungsspecification 9 902 09 50 MATING/UNMATING OF THE CONNECTOR IS DESCRIBED IN APPLICATION SPECIFICATION 9 902 09 50 |

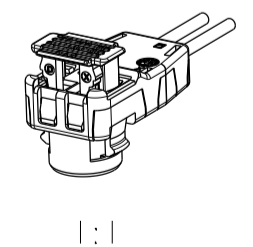


3D Ansichten
3D VIEWS



Dargestellt: Kodierung I
DISPLAYED: CODING I

| MVL | Referenz REFERENCE | PPI0001640 | PPI0001641 | PPI0001642 | PPI0001721 | PPI0001722 | PPI0001723 | PPI0001460 | PPI0001461 | PPI0001462 |
|--------|---|-------------------------------------|----------------------------|-----------------------|-------------------------------------|----------------------------|-----------------------|-------------------------------------|----------------------------|-----------------------|
| DELPHI | Referenz REFERENCE | 13984658 | 13984656 | 33511755 | 13672195 | 13675257 | 13675262 | 13800250 | 33511758 | 33511759 |
| | Kabelausgang Cable exit | 1.2mm to 1.5mm cable outer diameter | | | 1.4mm to 1.7mm cable outer diameter | | | 1.6mm to 1.9mm cable outer diameter | | |
| | Ansichten nicht maßstabgerecht VIEWS NOT SCALED | CODING I | CODING II | CODING III | CODING I | CODING II | CODING III | CODING I | CODING II | CODING III |
| | | COLOUR: BLACK | COLOUR: LIGHT GREEN | COLOUR: YELLOW | COLOUR: BLACK | COLOUR: LIGHT GREEN | COLOUR: YELLOW | COLOUR: BLACK | COLOUR: LIGHT GREEN | COLOUR: YELLOW |
| | | | | | | | | | | |
| | Farbe Color | Schwarz/BLACK | Lichtgruen/LIGHT GREEN | Gelb/YELLOW | Schwarz/BLACK | Lichtgruen/LIGHT GREEN | Gelb/YELLOW | Schwarz/BLACK | Lichtgruen/LIGHT GREEN | Gelb/YELLOW |
| | Material MATERIAL | PBT-GF15 | PBT-GF15 | PBT-GF15 | PBT-GF15 | PBT-GF15 | PBT-GF15 | PBT-GF15 | PBT-GF15 | PBT-GF15 |
| | Farbe COLOUR | | | | | YELLOW | | | | |
| | Material MATERIAL | | | | | PBT-GF15 | | | | |
| | Farbe COLOUR | | | | | ORANGE | | | | |
| | Material MATERIAL | | | | | PBT-GF15 | | | | |
| | Material MATERIAL | | | | | CuSn4 | | | | |
| | Material MATERIAL | | | | | CuSn4 | | | | |
| | Material MATERIAL | | | | | Ferrite | | | | |



| | | | |
|--|------------------------------------|--|--|
| | D | DELPHI P/N ADDED Note 2 Removed Connector code IV Removed | |
| 209/10 | C | Connector code IV added | |
| 587/08 | B | Variants with cable exit for 1.2-1.5 mm cable outer diameter added | |
| 202/07 | A | Initial release | |
| ECN-NO. EKN-NUMMER | POSITION POSITION | CHANGE DESCRIPTION ÄNDERUNGSBESCHREIBUNG | |
| PROJECT SPEC. PROJEKTSPEC. | PACKAGING SPEC. VERPACKUNGSPEC. | APPLICATION SPEC. ANWENDUNGSPEC. | COPYRIGHT DELPHI CORPORATION AND/OR ITS AFFILIATES. ALL RIGHTS RESERVED. REVISED THIS DRAWING IS THE PROPERTY OF DELPHI CORPORATION AND CONTAINS DELPHI CONFIDENTIAL INFORMATION. THE REPRODUCTION, DISTRIBUTION AND RELEASE OF THIS DOCUMENT OR ITS CONTENTS TO OTHERS, WITHOUT EXPRESS AUTHORIZATION, IS PROHIBITED. DELPHI AND DELPHI LOGO ARE TRADEMARKS OF DELPHI CORPORATION. DELPHI AND DELPHI LOGO ARE TRADEMARKS OF DELPHI CORPORATION. |
| See notes | | See notes | |
| TOLERANZEN TOLERANCES | MATERIAL MATERIAL | SERIEPLATZ SERIES PLACE | DELPHI DELPHI |
| CONTRACT NO. VERTRAGS-NR. | COLOR FARBE | ECO LEX: Code GN | DELPHI DELPHI |
| DO NOT REASURE DRAWING NICHT WIEDERHERSTELLEN | DESIGNED BY ENTWURFEN VON | SCANNING CODE GN | DELPHI DELPHI |
| DATE DATUM | NAME NAME | TITLE BEZEICHNUNG | DRAWING NUMBER ZEICHN.-NUMMER |
| 20100907 | Vin HEGEMER | SRS CONNECTOR AK2 FERRITE | PCC0459669 |
| 20100914 | Franz OGDENBERG | PROJECT PROJEKT | STATUS STATUS |
| 20100929 | M GUNDBEREN | FPB90-1 Large CPA | REV. INDEX REV. INDEX |
| 20100904 | Harald HOLMES | ESR NO. ESR-NUMMER | SCALE MAßSTAB |
| 20100904 | | EU-050595 | 5:1 |
| FILE NAME DATE | FILE NAME DATE | FILE NAME DATE | FILE NAME DATE |
| PCC0459669 | | | |