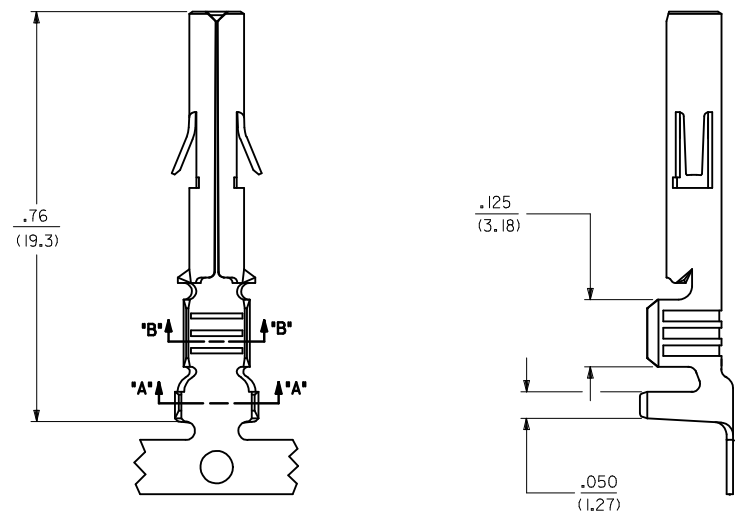
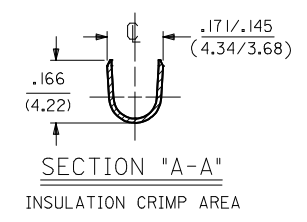
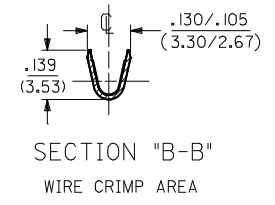
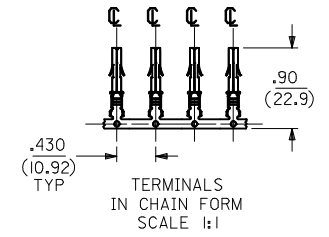
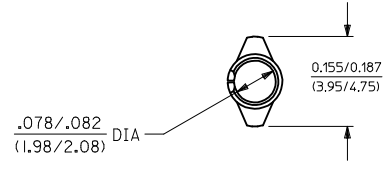


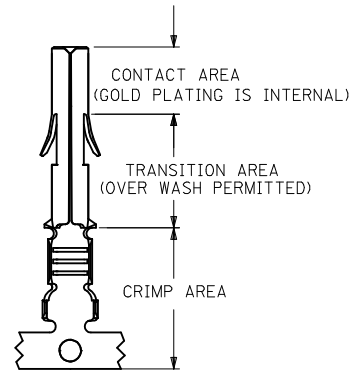
**SOCKET TERMINAL**  
42024-\*\*\*



SEE SHEET 2 FOR CHART, MATERIAL, PLATING, NOTES, AND CRIMP OPTIONS

|  |                                      |                                       |        |   |            |              |  |                        |  |
|--|--------------------------------------|---------------------------------------|--------|---|------------|--------------|--|------------------------|--|
| DRAWING UPDATED<br>EC NO: I2014-0115<br>CHIKD: DRWN:SS06<br>APPR:KPRASAD<br>2014/01/09<br>2014/01/13 | QUALITY SYMBOLS<br>▽=0<br>▽=0<br>▽=0 | GENERAL TOLERANCES (UNLESS SPECIFIED) |        | DIMENSION STYLE<br>IN/MM  |            | SCALE<br>--- | DESIGN UNITS<br>INCH                               | THIRD ANGLE PROJECTION |  |
|  |                                      | 4 PLACES                              | ± .010 | ± .010  | DRAWN BY   | DATE         | TITLE<br>TERMINAL, SOCKET<br>84/(2.13) DIA. SERIES |                        |  |
|  |                                      | 3 PLACES                              | ± .015 | ± .015  | CHECKED BY | DATE         |  |                        |  |
|  |                                      | 2 PLACES                              | ± .025 | ± .025  | KPRASAD    | 2004/09/27   | APPROVED BY<br>DATE<br>KPRASAD 2004/09/27          |                        |  |
| ANGULAR ±1/2°  |                                      | MATERIAL NO.                          |        | DOCUMENT NO.  |            | SHEET NO.    |  |                        |  |
| DRAFT WHERE APPLICABLE MUST REMAIN WITHIN DIMENSIONS   |                                      | SIZE<br>A2                            |        | THIS DRAWING CONTAINS INFORMATION THAT IS PROPRIETARY TO MOLEX INCORPORATED AND SHOULD NOT BE USED WITHOUT WRITTEN PERMISSION |            |              |  |                        |  |

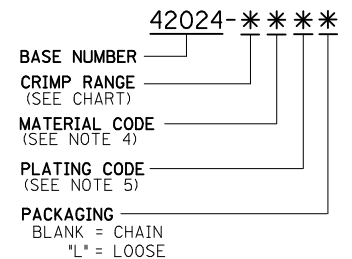
| ENG. NO.   | EDP NO.     | FINISH<br>(REF) | CONTACT AREA<br>(REF) | CRIMP AREA<br>(REF)   | MATERIAL<br>(REF) | WIRE SIZE   | INSULATION DIA. | STATUS     |
|------------|-------------|-----------------|-----------------------|-----------------------|-------------------|-------------|-----------------|------------|
| 42024-IA1  | 002-08-1001 | SDES-88-P901    | ----                  | ----                  | C26000            | #14-#20 AWG | .060-.130       | ACTIVE     |
| 42024-IAL  | 002-08-1002 | SDES-88-P901    | ----                  | ----                  | C26000            | #14-#20 AWG | .060-.130       | ACTIVE     |
| 42024-IB1  | 002-08-1003 | SDES-88-P901    | ----                  | ----                  | C51000            | #14-#20 AWG | .060-.130       | ACTIVE     |
| 42024-IBL  | 002-08-1004 | SDES-88-P901    | ----                  | ----                  | C51000            | #14-#20 AWG | .060-.130       | ACTIVE     |
| 42024-IA2  | 002-08-1005 | SEE NOTE 5      | .000030 MIN GOLD      | .000100 MIN MATTE TIN | C26000            | #14-#20 AWG | .060-.130       | NOT TOOLED |
| 42024-IA2L | 002-08-1006 | SEE NOTE 5      | .000030 MIN GOLD      | .000100 MIN MATTE TIN | C26000            | #14-#20 AWG | .060-.130       | NOT TOOLED |
| 42024-IB2  | 002-08-1007 | SEE NOTE 5      | .000030 MIN GOLD      | .000100 MIN MATTE TIN | C51000            | #14-#20 AWG | .060-.130       | NOT TOOLED |
| 42024-IB2L | 002-08-1008 | SEE NOTE 5      | .000030 MIN GOLD      | .000100 MIN MATTE TIN | C51000            | #14-#20 AWG | .060-.130       | NOT TOOLED |



### PLATING REGIONS

APPLIES TO GOLD PLATED  
TERMINALS ONLY

### LEGEND:



#### NOTES:

- SOCKET TERMINALS FOR USE WITH THE .084/(2.13) SERIES HOUSINGS:  
PLUG (42021-\*\*) CAP (42022-\*\*)
- SOCKET TERMINALS MATE WITH PIN TERMINALS: .084/(2.13) DIA. SERIES (42023-\*\*\*\*).
- TERMINALS FINISHED IN CHAIN UNLESS SPECIFIED LOOSE. "L" SUFFIX INDICATES LOOSE FORM. (SEE TABLE)
- MATERIAL: .012/(0.30) THICK STRIP:  
A = BRASS, #C26000, PER SMES-124-C7.  
B = PHOSPHOR BRONZE, #C51000, PER SMES-124-E7.
- FINISH:  
1 = HOT TIN DIP 20 m.l./(.051 MICRONS) MINIMUM (PER SDES-88-P901).  
2 = 30 (M.I) / 0.75 MICRONS) MIN SELECT GOLD AND 100 (M.I) (2.50 MICRON) MIN SELECT TIN (MATTE) OVER 50 (M.I) (1.25 MICRONS) MIN NICKEL OVERALL
- CRIMP RANGE: SEE CHART.
- PRODUCT SPECIFICATION PS-42022-0001 APPLIES.

|   |                                      |                                       |      |                                 |                    |   |                                      |   |
|---|--------------------------------------|---------------------------------------|------|---------------------------------|--------------------|---|--------------------------------------|---|
| <b>DRAWING UPDATED</b><br>EC NO: 12014-0115<br>DRWN:SS06<br>CHKD:<br>APPR:KPRASAD<br>REV: | QUALITY SYMBOLS<br>∇=0<br>∇=0<br>∇=0 | GENERAL TOLERANCES (UNLESS SPECIFIED) |      | DIMENSION STYLE<br><b>IN/MM</b> |                    | SCALE<br>---  | DESIGN UNITS<br><b>INCH</b>          | THIRD ANGLE PROJECTION  |
|   |                                      | 4 PLACES ±---                         | ±--- | mm                              | INCH               | DRAWN BY<br>SUDHIR  | DATE<br>2004/09/27                   | <b>TERMINAL, SOCKET</b><br><b>84/(2.13) DIA. SERIES</b><br><br> |
|   |                                      | 3 PLACES ±---                         | ±--- |                                 |                    | CHECKED BY<br>KPRASAD   | DATE<br>2004/09/27                   |   |
| 2 PLACES ±---   | ±---                                 |                                       |      | APPROVED BY<br>KPRASAD          | DATE<br>2004/09/27 |   |                                      |   |
|   |                                      | 1 PLACE ±---                          | ±--- |                                 |                    | MATERIAL NO.<br><b>SEE CHART</b>  | DOCUMENT NO.<br><b>SD-42024-****</b> | SHEET NO.<br><b>2 OF 2</b>                                      |
|   |                                      | 0 PLACE ±                             | ±    |                                 |                    | THIS DRAWING CONTAINS INFORMATION THAT IS PROPRIETARY TO MOLEX INCORPORATED AND SHOULD NOT BE USED WITHOUT WRITTEN PERMISSION |                                      |   |