

© COPYRIGHT. THIS DRAWING HAS COPYRIGHT AND MAY NOT BE COPIED IN WHOLE OR IN PART OR USED FOR ANY PURPOSE OTHER THAN FOR WHICH IT IS SUPPLIED WITHOUT EXPRESS WRITTEN CONSENT OF YAZAKI EUROPE LIMITED.

1

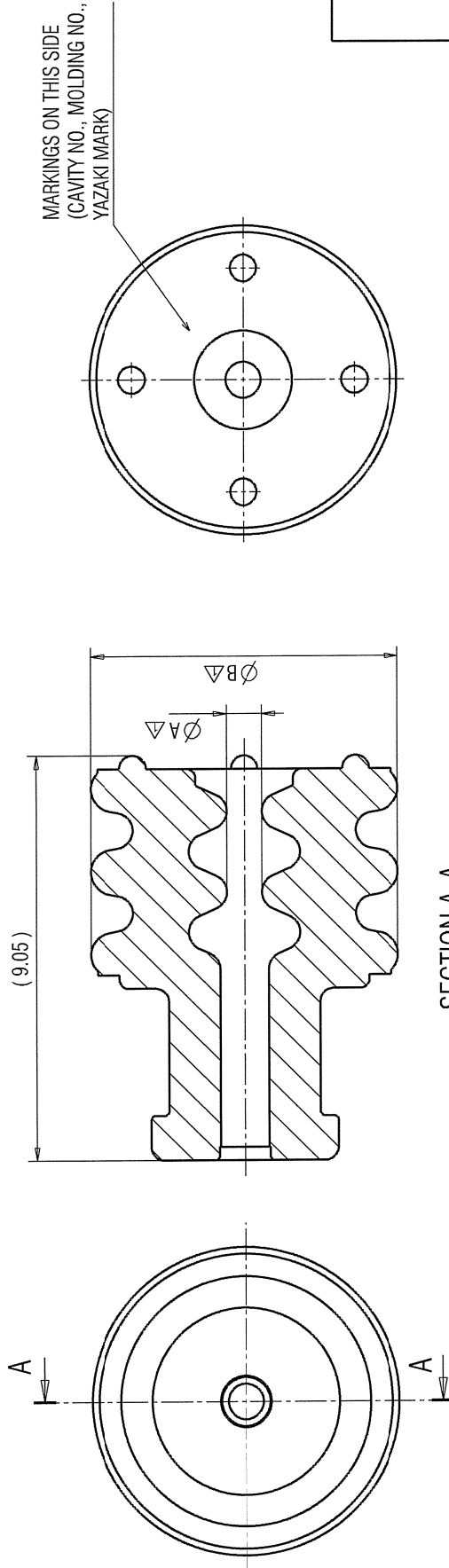
NOTES:

- △ 1. MATERIAL: SEE TABLE;
- △ 2. COLOR: SEE TABLE;
- 3. APPLICABLE TERMINALS: 7114-4150-02, ETC.,
7116-4150-02, ETC.;
- 4. APPLICABLE FOR CONNECTOR CAVITY DIAMETER 6.10 mm;
- 5. RUBBER PARTS GENERAL TOLERANCE ±0.2 mm;
- △ 6. THE MATERIALS USED IN THIS PRODUCT ARE IN CONFORMITY WITH REQUIREMENTS OF EU ELV 2000/53/EC DIRECTIVE AND ASSOCIATED DOCUMENTS.

2

PART NUMBER	MATERIAL	COLOUR	A Δ [mm]	B Δ [mm]	WIRE OUTER DIAMETER RANGE [mm]	WEIGHT Δ [g]
7158-3111-60	SELF LUBRICANT SILICONE RUBBER	GREEN	ϕ 0.80	ϕ 6.90	1.2 ~ 1.9	0.191
7158-3112-70		YELLOW	ϕ 1.35		1.8 ~ 2.3	0.184
7158-3113-40		WHITE	ϕ 1.65	2.1 ~ 3.0	0.179	
7158-3110-40		LIGHT GRAY	ϕ 2.80	3.1 ~ 3.4	0.164	
7172-5197-80		BROWN	ϕ 3.20	ϕ 6.70	3.4 ~ 3.8	0.120

3



SECTION A-A

LET	DATE	REVISION RECORD	GENERAL TOLERANCE	APPROVED	CHECKED	DWG SOURCE	DWG DATE	UNIT	SCL	ANGLE	CUSTOMER DWG NO.	MATL. SPEC.	TREAT. & FIN.	ISSUE MARK	
△	20.9.2017.	CHANGED DRAWING & TABLE, ADD PART NUMBERS	Y17-0939	I.J.								SEE TABLE			
-	23.2.1999.	NEW	C99-E013	G.N.											
LET	DATE	REVISION RECORD	NO.	CHKD	VENDOR	VENDOR NO.	OFFICE	YEL-K	TRIAL PART NO.	7F9457-9338, etc.					
A	±0.15	±0.2	±0.3	±0.5	±0.75	±0.1	R	NEW	22.2.1999.	mm	10/1	3			
B	±0.2	±0.3	±0.55	±0.95	±1.4	±0.1									
C	±0.3	±0.5	±0.8	±1.4	±2	±0.45									
SPECIFIED															
SEE TABLE												21.03.2017.	21.09.2017.	21.5.1996.	20.9.2017.
PART NO. 7158-3111-60, ETC.												CH. CODE			
NAME 2.8 SYSTEM SEALED CONNECTOR												DWG NO.	7158-3111-60: R	SET DWG NO.	
WIRE SEAL															



PRINTED COPIES ARE UNCONTROLLED. THEY ARE POTENTIALLY OUT-OF-DATE AND INVALID. DATABASE IS MASTER.

1

2

3