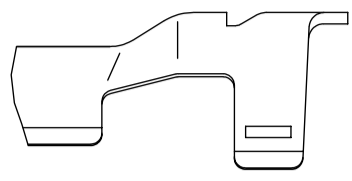
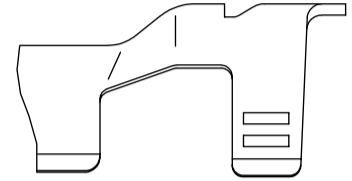
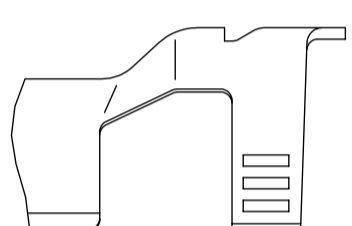
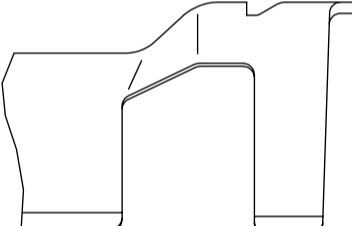
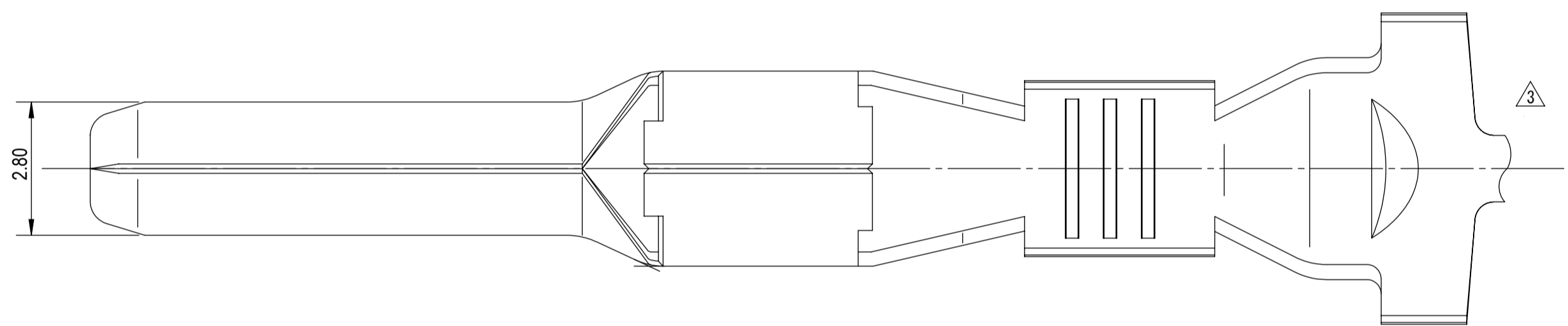
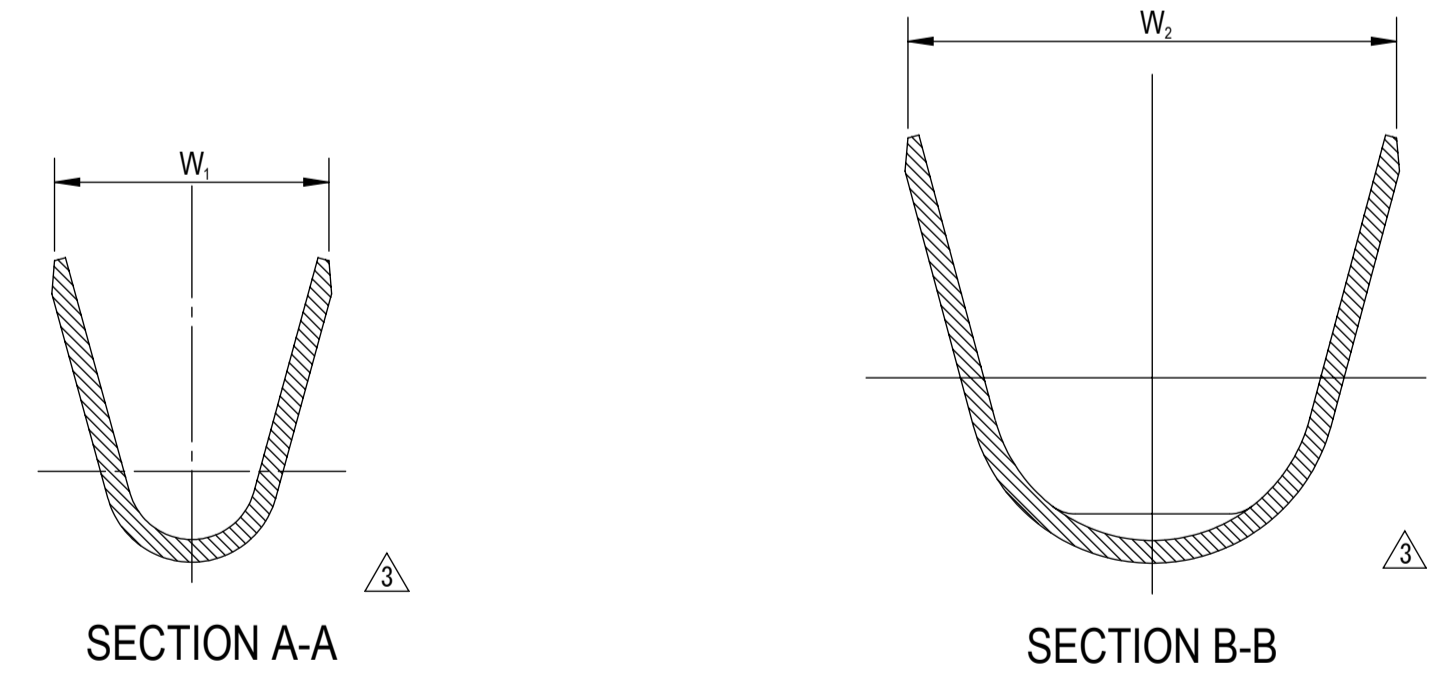
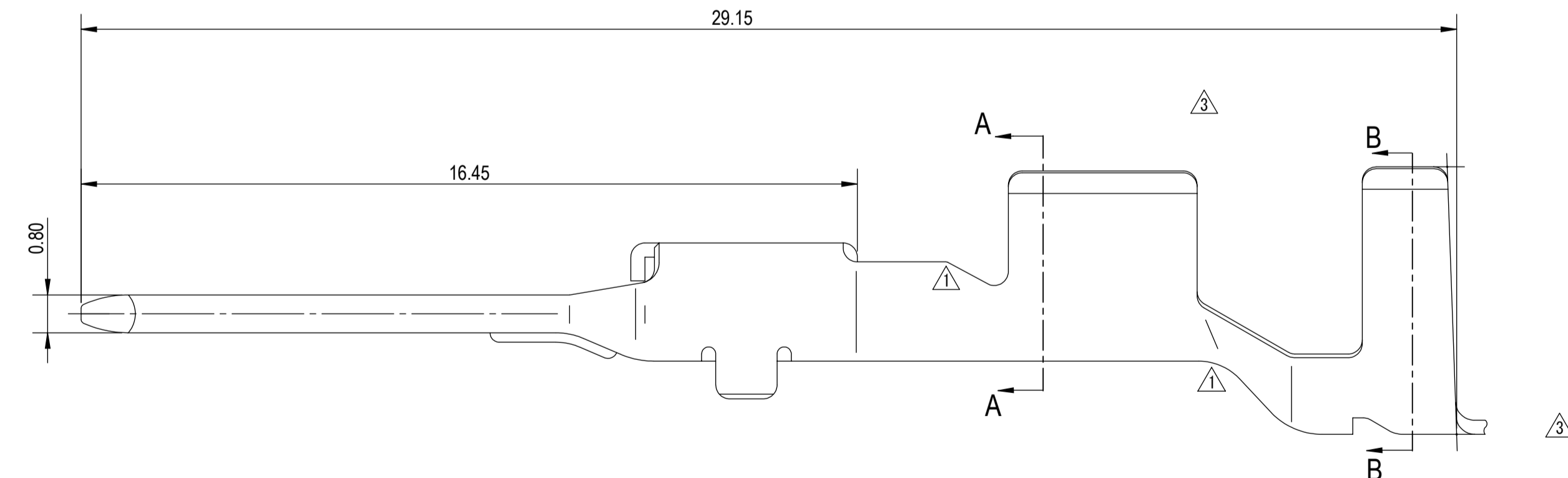
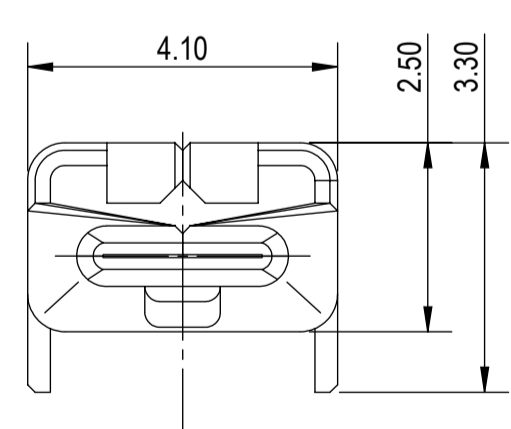


APPLICABLE WIRE SIZE MARK	
	(5/1)
	(5/1)
	(5/1)
	(5/1)

PART NUMBER AND CH. CODE	W ₁	W ₂	WIRE SIZE (mm ²)	MASS (g)
7114-4150-02, [A]	2.30	5.05	0.3-0.6 OR EQUIVALENT	(0.55)
7114-4151-02, [A]	3.00	5.60	0.75-1.40 OR EQUIVALENT	(0.55)
7114-4152-02, [A]	3.70	6.55	1.5-2.5 OR EQUIVALENT	(0.55)
[3] 7114-4153-02	4.30	6.80	3.0-4.0 OR EQUIVALENT	(0.58)



- △ NOTES:
- PARTS MUST BE PURCHASED FROM YAZAKI.
 - PARTS MUST BE FREE OF BURRS AND SHARP EDGES THAT MAY BE DETRIMENTAL TO SATISFACTORY ASSEMBLY, SAFE HANDLING, OR FUNCTION OF THE PART.
 - MATERIAL: COPPER ALLOY.
 - PLATING: TIN (Sn) PLATED.
 - MATING PART NUMBER: SEE 7116-4150-02:R DRAWING.
 - APPLICABLE WIRE SEAL: SEE 7158-3111-60:R DRAWING.
 - PART MUST TO CONFORM USCAR-2 REV 5, NOV 2007, TC3, VC2.
 - PART TO COMPLY WITH YPES-31-038 REQUIREMENTS.
 - THIS DRAWING IS TO BE USED FOR INTERNAL YAZAKI PSW SUBMISSION.
 - TERMINAL 7114-4153-02 SHOULD BE USED ONLY FOR THOSE APPLICATIONS WHERE EXCESSIVE VOLTAGE DROP IN A SMALLER SIZE WIRE MAY ADVERSELY AFFECT THE FUNCTION OF THE CIRCUIT.



△	DATE	REVISION RECORD	NO.	CHKD
△	10-16-2017	REDRAWN, ADDED PART NUMBER, REVISED NOTES	C17-AB06	I.M
△	07-04-2008	CHANGED WIRE SIZE	C08-Z469	T.Y
△	06-29-1998	CHANGED FORM, [A]	C98-M171	Y.I
-	02-21-1997	NEW	C97-L106	Y.U

GENERAL TOLERANCE											
A	±0.15	±0.20	±0.30	±0.50	±0.75	±0.20	±0.30	±0.50	±2.50	±3°	0.1
B	±0.20	±0.30	±0.55	±0.95	±1.40	±0.20	±0.30	±0.50	±2.50	±3°	0.15
Ⓢ	±0.30	±0.50	±0.80	±1.40	±2.00						

CUSTOMER		CUSTOMER DWG. NO.		MTRL SPEC.		TREAT. & FIN.	
CUSTOMER PART NO.		CUSTOMER DWG. NO.		N/A		N/A	
OFFICE YNA		TRIAL PART NO.		NAME 2.8 SYSTEM SEALED CONNECTOR			
VENDOR				MALE TERMINAL			
VENDOR NO.				PART NO. 7114-4150-02, ETC.			
DWG TYPE R		DWG SOURCE 7114-4150-02:M		DWG DATE 02-21-1997		UNIT mm	
APPROVED		CHECKED		CHECKED		DESIGN DRAWN	
						Y. UCHIDA ISABEL MUNIZ	
						05-31-1996 11-17-2017	
				PART NO. 7114-4150-02:R			
				YAZAKI CORPORATION			

ISSUE MARK