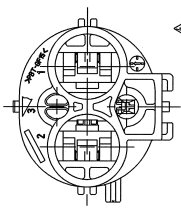
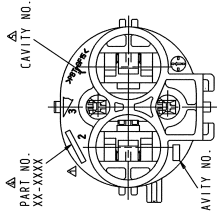


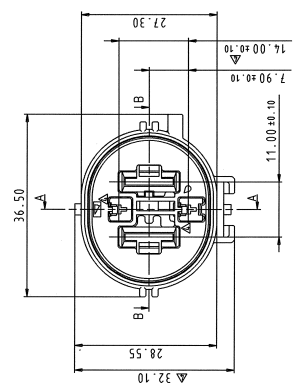
2P SEALED HYBRID CONNECTOR  
P.N. 7282-8495-10



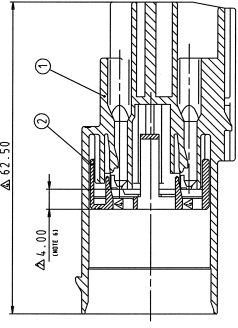
3P SEALED HYBRID CONNECTOR  
P.N. 7282-8496-30



4P SEALED HYBRID CONNECTOR  
P.N. 7282-8497-90, 7282-8598-30



SECTION A-A



ISOMETRIC VIEW  
(SCALE 1:1)

△△△ TABLE

NO.	PART NUMBER	PART NAME	MATERIAL	COLOR	QTY	SUBASSY NO.
2	7158-6013	FRONT HOLDER M	PBT-GF15	NATURAL	1	●
1	7182-8598-30 (mm)	4P HOUSING M	PBT-GF15	BLACK	1	●
1	7182-8497-90	4P HOUSING M	PBT-GF15	BLUE	1	●
1	7182-8496-30	3P HOUSING M	PBT-GF15	BLACK	1	●
1	7182-8495-10	2P HOUSING M	PBT-GF15	D-GREY	1	●

- △△△ NOTES:
- MATERIAL: SEE TABLE;
  - COLOR: SEE TABLE;
  - APPLICABLE TERMINALS: 7114-4103-02; 7114-4103-01; 7114-4103-08; 7114-4103-08; 7114-3250; 7114-3251;
  - APPLICABLE SEALS: 7158-3030-50; 7158-3031-90; 7158-3034-50; 7158-3035; 7158-3036-70;
  - APPLICABLE CLIP FIXTURES: 7147-8925-30; 7147-8926-30; 7147-8927-30; 7147-8928-30;
  - THIS DIMENSION SHOWS THE PRESET POSITION OF FRONT HOLDER ON THE SUBASSEMBLY
  - MATING PRODUCT: 7283-8495-10; 7283-8496-30; 7283-8497-90; 7283-8598-30;
  - WHEN ORDERING THIS PRODUCT, CUSTOMER TAKES FULL RESPONSIBILITY OF CONSEQUENCE FOR MATING WITH WRONG PART NUMBER SINCE COLOR CODING;
  - FOR GENERAL GEOMETRICAL TOLERANCE SEE TABLE (ECCENTRICITY);
  - HANDLING MANUAL: YPES-11-607;
  - PRODUCT STANDARD: YPES-11-04-087;
  - THE MATERIALS USED IN THIS PRODUCT ARE IN CONFORMITY WITH REQUIREMENTS OF EU 2000/53/EEC DIRECTIVE AND ASSOCIATED DOCUMENTS.

DATE	REVISION	RECORD	NO.	CHKD
21.05.2011	YTT-0426	JJ		
05/04/05	CHANGED FORM AND NOTES	CS-0821	V.B.	
03/03/05	CHANGED FORM AND NOTES	CS-0540	V.B.	
03/03/05	CHANGED FORM AND NOTES	CS-0540	V.B.	
03/07/07	CHANGED FORM, NOTES & DIM	CS-0526	V.B.	
03/07/08	CHANGED FORM & NO.	CS-0526	V.B.	
03/07/08	CHANGED FORM & NO.	CS-0526	V.B.	
03/07/08	CHANGED FORM & NO.	CS-0526	V.B.	
03/07/08	CHANGED FORM & NO.	CS-0526	V.B.	
03/07/08	CHANGED FORM & NO.	CS-0526	V.B.	

CUSTOMER PART NO.	CUSTOMER Dwg NO.	MATERIAL	SEE NOTES	TREAT.	ISSUE MARK
OFFICE: YEL-K-A	TRIAL PART NO. X60-82-E126 ETC. △	NAME	2P 1.5+2P 9.5 WP HYBRID CONN.		
VENDOR	DWG: YPES-11-04-087	△ (M) SUBASSEMBLY			
GENERAL TOLERANCE	DESIGN UNIT: mm	ANGLE PARTS NO. 7282-8497-90 ETC. △			
1. MAX SURFACE FINISH: Ra 0.4	2. SURFACE FINISH: Ra 0.4	CH. CODE: 7282-8497-90 ETC. △			
A ±0.15 ±0.2 ±0.3 ±0.5 ±1.4	B ±0.2 ±0.3 ±0.5 ±1.4	DWG NO.: 7282-8497-90 R.A.			
C ±0.3 ±0.5 ±1.4 ±2	D ±0.3 ±0.5 ±1.4 ±2	SET Dwg NO.			
GENERAL TOLERANCE	DESIGN UNIT: mm				
1. MAX SURFACE FINISH: Ra 0.4	2. SURFACE FINISH: Ra 0.4				
A ±0.15 ±0.2 ±0.3 ±0.5 ±1.4	B ±0.2 ±0.3 ±0.5 ±1.4				
C ±0.3 ±0.5 ±1.4 ±2	D ±0.3 ±0.5 ±1.4 ±2				
APPROVED	CHECKED	DESIGN	DRAWING		
Y. TAKAKURA	M. YAMAZAKI	V. MAHOVLIK	B. FREITZ		
DATE: 2011.08.08	DATE: 2011.08.08	DATE: 2011.08.08	DATE: 2011.08.08		