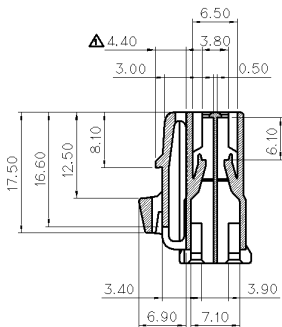
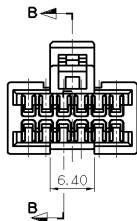


SECTION A-A

NO.	MATERIAL	COLOR
0		NATURAL
1	PBT	RED
2		BLUE
3		YELLOW
40		DARK GRAY
41		LIGHT GRAY
5		BLACK
6		DARK GREEN
7		BROWN
8		LIGHT GREEN
9		MAGENTA
11		ORANGE



SECTION B-B



GENERAL TOLERANCE (HOUSING)								USED ON
10MAX	50MAX	100MAX	250MAX	250VR	ANGLE	ECCENT		
±0.2	±0.3	±0.55	±0.95	±1.4	±30'	0.1		

▲ 주 기

1. 지시하지 않은 반경 R은 0.4으로 한다.
2. 지시하지 않은 모따기 C는 0.5으로 한다.
3. 기능상 유해한 BURR 및 WELDLINE등이 없을것.
4. 적용 TERMINAL : ST730517-3
5. 제품내 함유된 6대 유해물질 (납,수은,카드뮴,6가크롬, PBBs,PBDEs)은 EU ELV 지침 및 RoHS 법규에서 지정한 최대 허용 농도를 초과해서는 안된다.

▲ NOTE

1. UNLESS OTHERWISE SPECIFIED ALL RADII TO BE 0.4 RADIUS.
2. UNLESS OTHERWISE SPECIFIED ALL CHAMFERS TO BE 0.5 CHAMFER.
3. MUST BE FREE OF FLASH, SINK AND IMPERFECTION THAT AFFECT FUNCTION.
4. APPLICABLE TERMINAL : ST730517-3
5. 6 HAZARDOUS SUBSTANCES IN PARTS (LEAD, MERCURY, CADMIUM, HEXA VALENT CHROMIUM, PBBs, PBDEs) SHALL NOT EXCEED THE MAXIMUM PERMISSIBLE CONCENTRATION PRESCRIBED UNDER EU ELV DIRECTIVE & RoHS REGULATION.



ISSUE MARK

KET KOREA ELECTRIC TERMINAL CO., LTD. (ENGINEERED)

MATERIAL		▲ SEE TABLE		CLASS	
FINISH		SEE TABLE		TYPE	
WIRE RANGE		10.06.30		INSULATION	
REVISION RECORD		DATE		SCALE	
DR.	RHO. 92.08.24	CHK.		SCALE	2/1
CHK.	S. W Lee	APP.	W. Lee	PART NO.	MG610376
PART NAME				SP 12F HOUSING	