

1 2 3 4 5 6 7 8 9 10 11

H

G

F

E

D

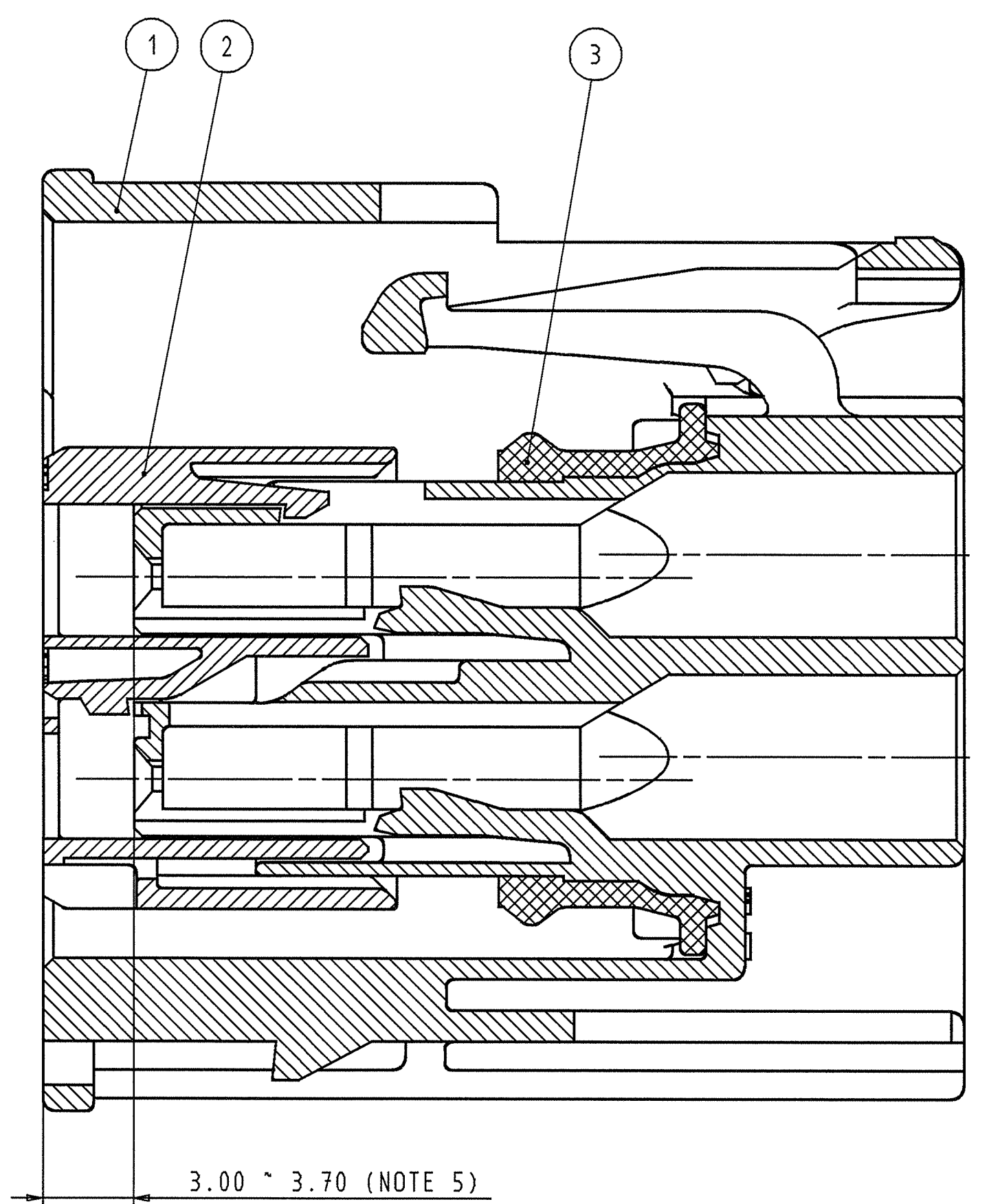
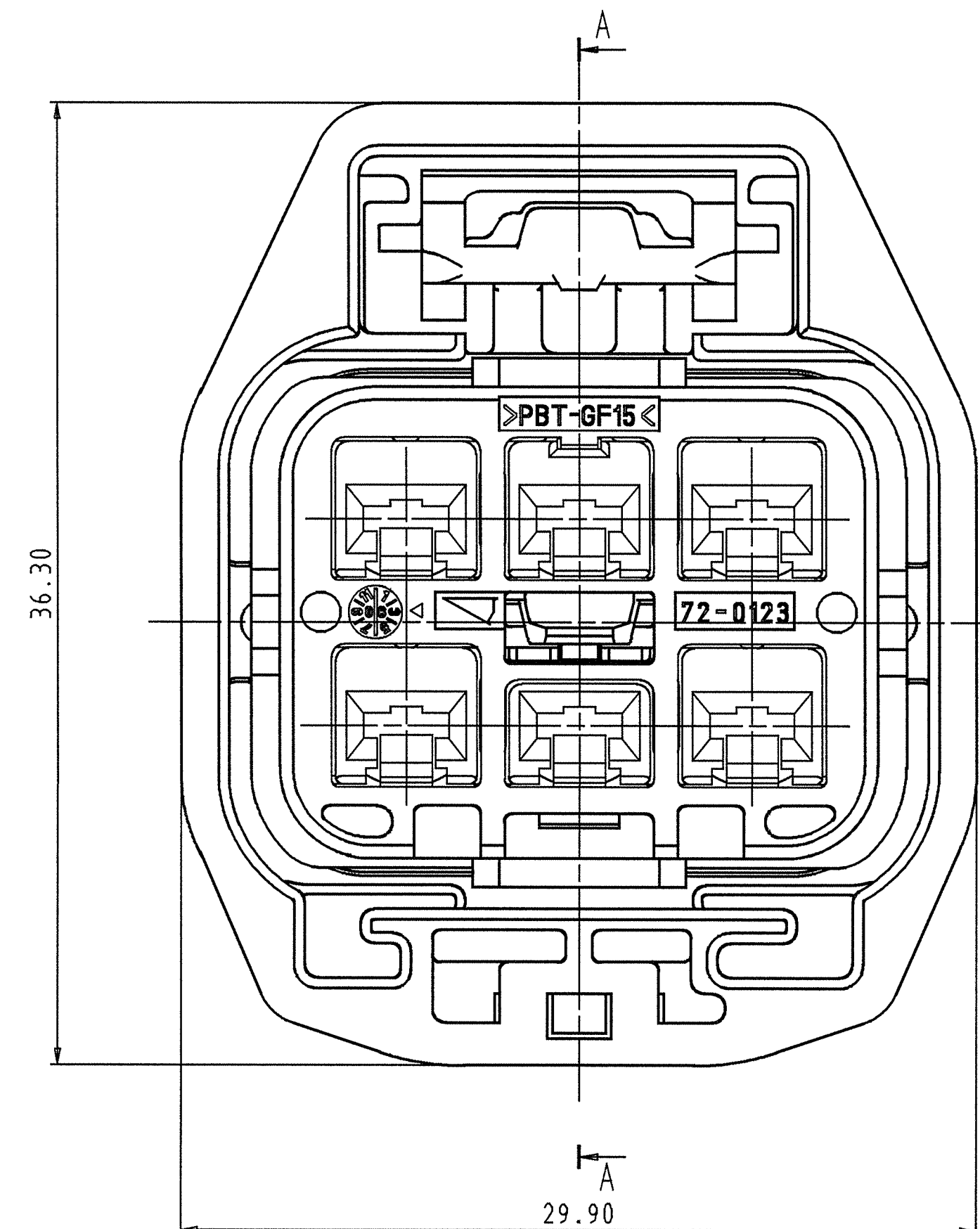
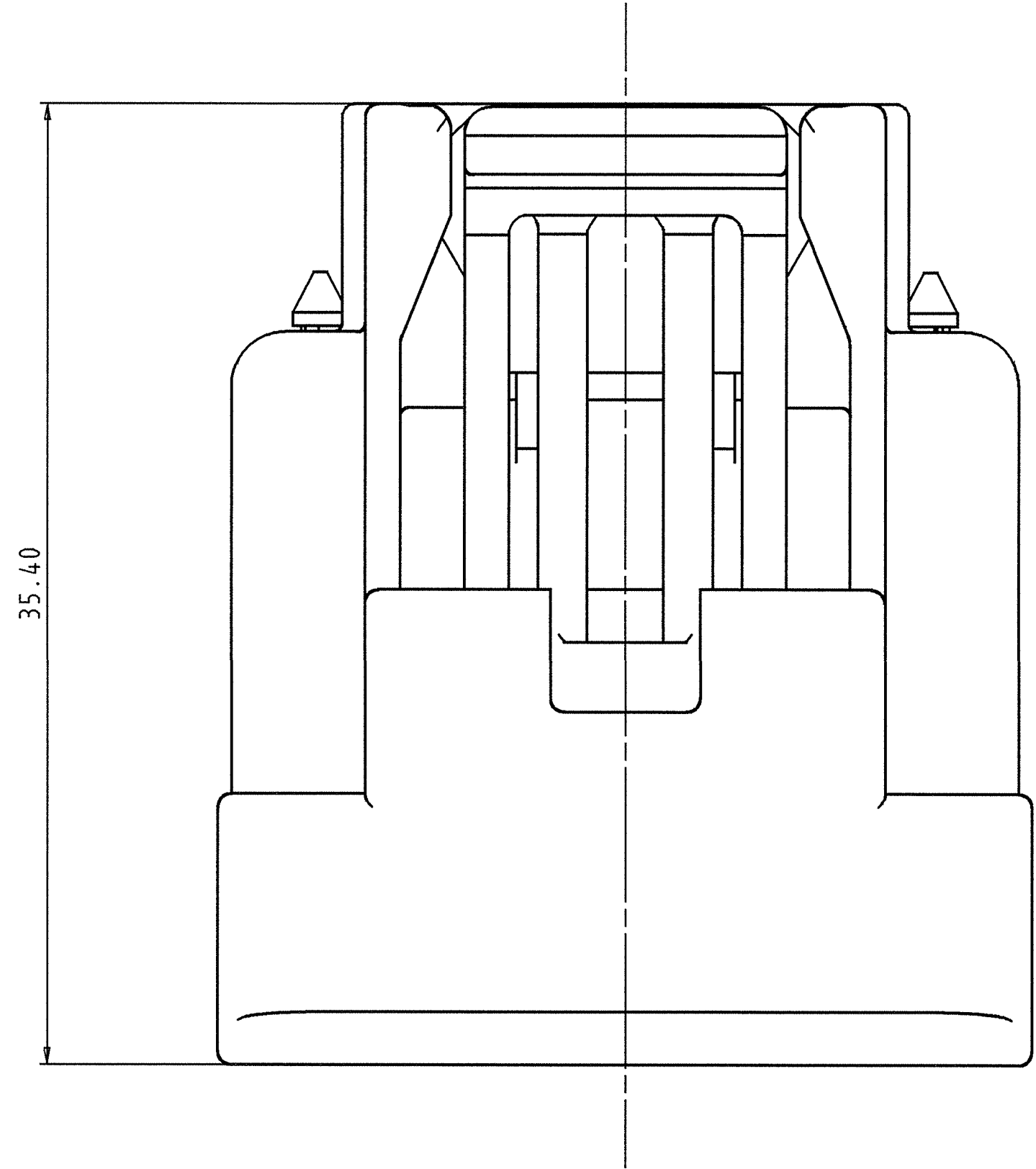
C

B

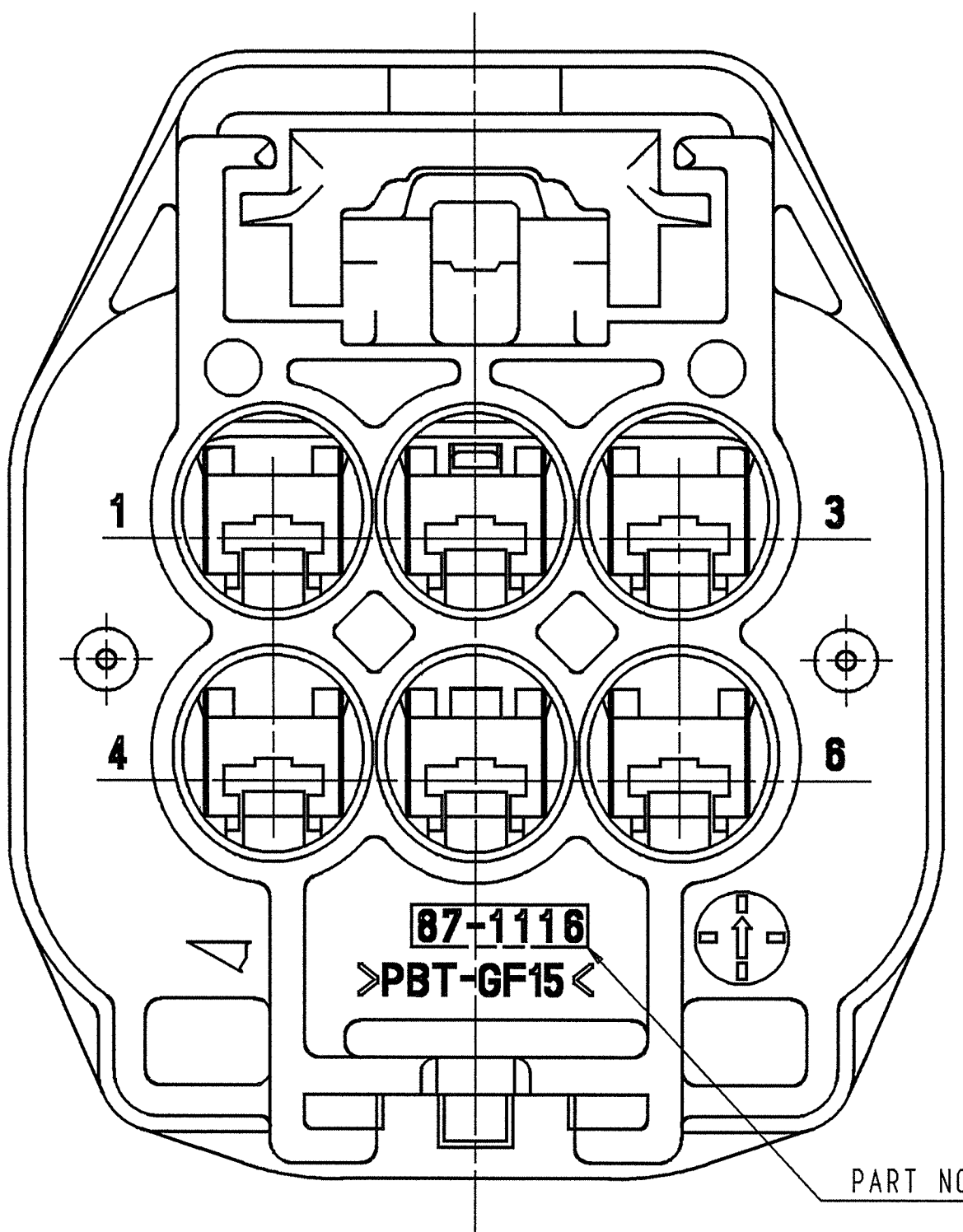
A

Δ	07/03/08	NEW	C07-0571	G.G.	
LET	DATE	REVISION RECORD	NO.	CHKD	

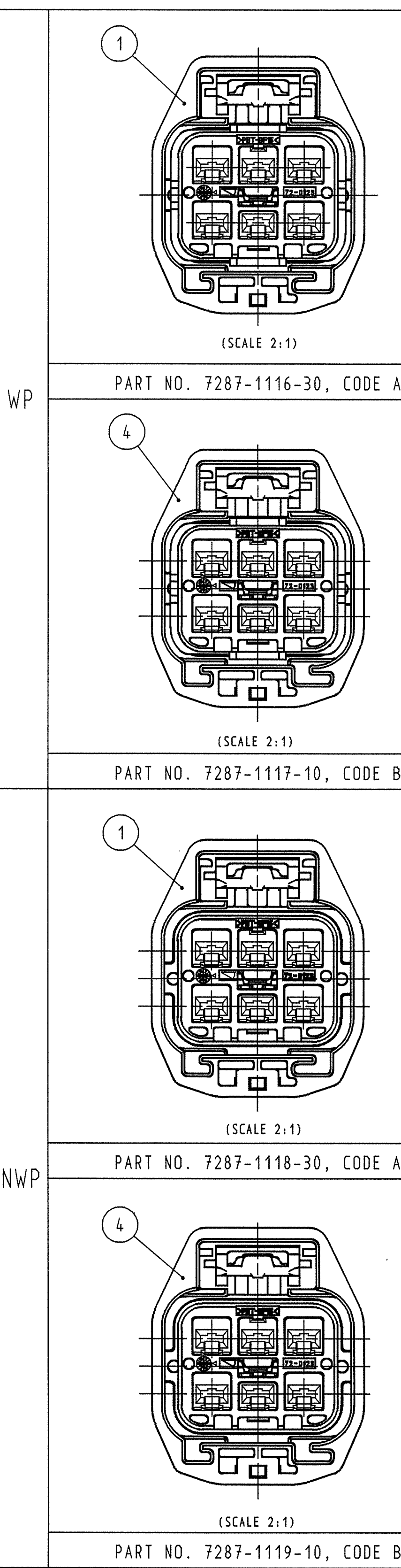
1 2 3 4 5 6 7 8 9 10 11



SECTION A-A

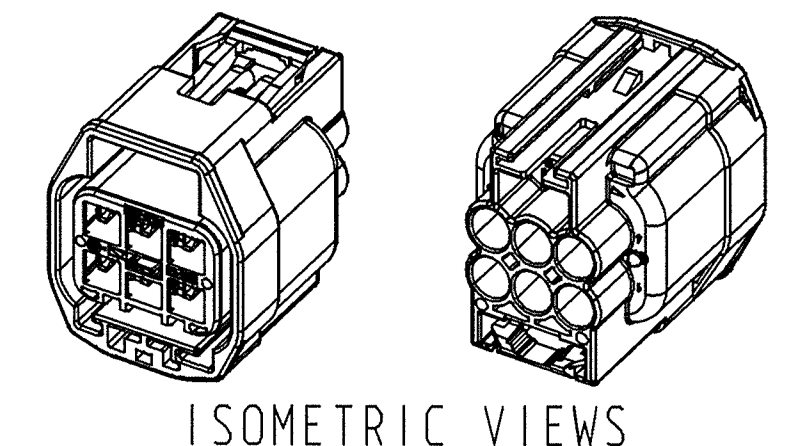


	CODE	YAZAKI SUB ASSEMBLY PART NO.	NO.	YAZAKI PART NO.	YAZAKI PART NAME	MATERIAL	COLOR	QTY.
WP	A	7287-1116-30	①	7187-1116-30	2.8 WP SYSTEM CONNECTOR 6P (F) HOUSING CODE A	PBT-GF15	BLACK	1
			②	7172-0123	2.8 WP SYSTEM CONNECTOR 6P (F) FRONT HOLDER	PBT-GF15	NATURAL	1
			③	7137-2699-90	2.8 WP SYSTEM CONNECTOR 6P (F) PACKING	SILICONE RUBBER	BLUE	1
	B	7287-1117-10	④	7187-1117-10	2.8 WP SYSTEM CONNECTOR 6P (F) HOUSING CODE B	PBT-GF15	DARK GRAY	1
			②	7172-0123	2.8 WP SYSTEM CONNECTOR 6P (F) FRONT HOLDER	PBT-GF15	NATURAL	1
			③	7137-2699-90	2.8 WP SYSTEM CONNECTOR 6P (F) PACKING	SILICONE RUBBER	BLUE	1
NWP	A	7287-1118-30	①	7187-1116-30	2.8 WP SYSTEM CONNECTOR 6P (F) HOUSING CODE A	PBT-GF15	BLACK	1
	B	7287-1119-10	②	7172-0123	2.8 WP SYSTEM CONNECTOR 6P (F) FRONT HOLDER	PBT-GF15	NATURAL	1
			④	7187-1117-10	2.8 WP SYSTEM CONNECTOR 6P (F) HOUSING CODE B	PBT-GF15	DARK GRAY	1
			②	7172-0123	2.8 WP SYSTEM CONNECTOR 6P (F) FRONT HOLDER	PBT-GF15	NATURAL	1



- NOTES:
1. MATERIAL: SEE TABLE;
 2. COLOR: SEE TABLE;
 3. APPLICABLE TERMINALS: 7116-4150-02, ETC.;
 4. APPLICABLE SEALS: 7158-3111-60, ETC.;
 5. THIS DIMENSION SHOWS THE PRESET POSITION OF FRONT HOLDER ON THE SUBASSEMBLY
 6. MATING PART ACCORDING INTERFACE DRAWING: 7287-1116-30:A;
 7. FOR GENERAL GEOMETRICAL TOLERANCE SEE TABLE (ECCENT-ECCENTRICITY);
 8. HANDLING MANUAL: N/A ;
 9. PRODUCT STANDARD: N/A .

CONFIDENTIAL



GENERAL TOLERANCE									
	10MAX	50MAX	100MAX	250MAX	2500VR	ANGLE	ECCENT		
A	±0.15	±0.2	±0.3	±0.5	±0.75	±30°	0.1		
B	±0.2	±0.3	±0.55	±0.95	±1.4	±30°	0.1		
③	±0.3	±0.5	±0.8	±1.4	±2	±30°	0.15		
SPECIFIED									
The materials used in this product are in conformity with requirements of EU CE 2006/55/EC directive and associated documents.									
16.4	09.03.2007	08.03.2007	08.03.2007	08.03.2007	08.03.2007	08.03.2007	08.03.2007	08.03.2007	08.03.2007

CUSTOMER		CUSTOMER DWG NO.		MATERIAL		TREAT.	
SPEC.		SEE TABLE		SEE TABLE		SEE TABLE	
OFFICE		YEL-Z		TRIAL PART NO.		NAME	
VENDOR		NEW		DESIGN		DRAWN	
H. LUTS		RESMAN		GREGURIC		KRIVOLAVKIN	
09.03.2007		08.03.2007		08.03.2007		08.03.2007	

PART NO.		7287-1116-30, ETC.		PART NO.		7287-1116-30, ETC.	
CH. CODE		7287-1116-30:R		CH. CODE		7287-1116-30:R	
SET DWG NO.		7287-1116-30:R		SET DWG NO.		7287-1116-30:R	
YAZAKI CORPORATION		YAZAKI CORPORATION		YAZAKI CORPORATION		YAZAKI CORPORATION	